



QUEBEC – ONTARIO

December 5, 2014

November employment: Good rally by Quebec, a slide in Ontario

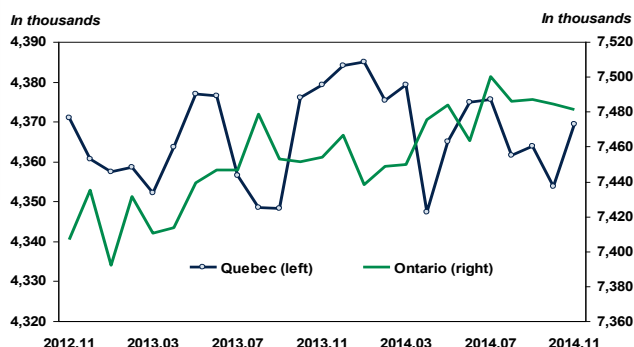
HIGHLIGHTS

- Quebec added 19,600 additional jobs in November, its best month in all of 2014.
- The unemployment rate stayed practically flat, going from 7.7% in October to 7.6% in November. The 15,500-person increase in the labour force is behind this result.
- In Ontario, it seems there was some pullback, with 33,900 jobs lost after gaining 61,700 in September and October.
- Ontario's unemployment rate grew 0.5 percentage points, climbing from 6.5% in October to 7.0% in November. This looks like a correction, since in October the unemployment rate had dropped 0.6%, going from 7.1% to 6.5%.

COMMENTS

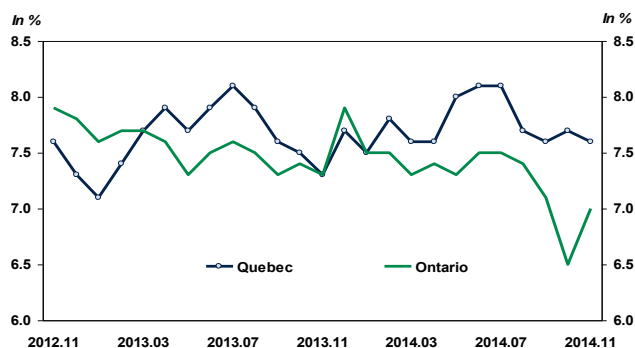
Two provinces, two different dynamics for both November and the last two years. For the month that just ended, Quebec's major gains were in the accommodation and food services sector (+20,800) and transportation and warehousing (+7,300). In Ontario, the most dramatic losses were in trade (-51,300) and transportation and warehousing (-18,300). The only notable gain was posted by the manufacturing sector (+11,600).

Since November 2012, the labour force has grown in Ontario, but not in Quebec



Sources: Statistics Canada and Desjardins, Economic Studies

Since November 2012, Ontario's unemployment rate has decreased, while it oscillated in Quebec



Sources: Statistics Canada and Desjardins, Economic Studies

Furthermore, when we look at the labour market over a longer horizon, we see that movement in the unemployment rate for these two provinces is contrasting. For the last two years, Ontario's has decreased, while the rate is stumbling in Quebec with no clear improvement. The labour force did not make any gains in Quebec for this period either, despite the increase posted in November. The stagnating labour force limits both the recruitment pool for employers and their chances of finding that diamond in the rough, while in Ontario, it is trending up.

Implications: Finally, Quebec's level of employment is rising, after months of waiting. However, while economic conditions seem to be clearing up in Quebec and Ontario as economic activity accelerates in the U.S., we must still expect some volatility in labour market data over the coming months. In all likelihood, the positive effects are starting to influence manufacturing production and should impact employment more in 2015.

Joëlle Noreau
Senior Economist

François Dupuis
Vice-President and Chief Economist

Hélène Bégin
Senior Economist

Benoit P. Durocher
Senior Economist

Francis Généreux
Senior Economist

Joëlle Noreau
Senior Economist

418-835-2450 or 1 866 835-8444, ext. 2450
E-mail: desjardins.economics@desjardins.com

December 5, 2014

Variation by sector - November 2014						
	GAINING Sectors	Balance		LOSING Sectors	Balance	
		1 month	1 year		1 month	1 year
CANADA	Others primaries	14,800	-10,500	Trade	-41,600	-2,500
	Accommodation and food services	13,100	58,300	Prof. and scient. services	-32,900	-11,700
	Health care	11,500	63,200	Transportation and warehousing	-14,300	800
	Fin., insurance and real estate	11,300	23,000	Construction	-5,300	37,300
QUEBEC	Accommodation and food services	20,800	28,200	Prof. and scient. services	-10,500	-29,500
	Transportation and warehousing	7,300	-11,600	Manufacturing	-9,900	-14,900
	Others services	5,700	-7,600	Fin., insurance and real estate	-9,400	-13,500
	Others primaries	5,300	3,700	Bus., build. and other supp. serv.	-1,900	1,300
ONTARIO	Fin., insurance and real estate	18,200	30,700	Trade	-51,300	-10,900
	Manufacturing	11,600	8,700	Transportation and warehousing	-18,300	-17,800
	Bus., build. and other supp. serv.	8,500	-11,900	Public administration	-12,600	-8,300
	Information, culture and recrea.	7,700	-1,800	Prof. and scient. services	-5,700	5,000

Source: LFS, Statistics Canada

Labour Market							
November 2014	NUMBER OF EMPLOYEES	JOB CREATION					
		in numbers					
Seasonally adjusted data	November 2014	Last month	Last 3 months	Since december	Last year	Last year in %	
TOTAL JOBS	Canada	17,957,900	-10,700	106,500	190,000	146,000	0.8%
	Quebec	4,036,400	19,600	11,900	-9,100	-25,200	-0.6%
	Ontario	6,960,200	-33,900	27,800	83,400	53,100	0.8%
PUBLIC SECTOR EMPLOYEES	Canada	3,650,800	22,600	-25,200	28,500	45,200	1.3%
	Quebec	899,300	11,000	6,000	23,700	14,300	1.6%
	Ontario	1,340,500	-2,600	-26,700	-1,600	12,400	0.9%
PRIVATE SECTOR EMPLOYEES	Canada	11,569,400	-45,600	148,600	92,000	61,800	0.5%
	Quebec	2,598,100	12,200	23,500	-26,600	-42,500	-1.6%
	Ontario	4,557,500	-31,500	61,300	52,300	34,300	0.8%
SELF-EMPLOYED	Canada	2,737,700	12,300	-17,000	69,500	39,100	1.4%
	Quebec	539,100	-3,500	-17,500	-6,100	3,100	0.6%
	Ontario	1,062,100	100	-6,900	32,600	6,400	0.6%

Source: Statistics Canada, Labour Force Survey

Labour Market - Recent trends Seasonally adjusted data

	Employment in numbers	Job creation in last:			Labour Force Numbers	Variation over 1 month	Participation rate	Employment rate	Unemploy- ment rate
		1 month	3 months	12 months					
Canada									
2013.11	17,811,900	25,100	41,800	183,600	19,138,100	19,900	66.4%	61.8%	6.9%
2013.12	17,767,900	-44,000	-7,200	99,000	19,151,400	13,300	66.4%	61.6%	7.2%
2014.01	17,797,300	29,400	10,500	145,900	19,130,500	-20,900	66.3%	61.6%	7.0%
2014.02	17,790,300	-7,000	-21,600	94,700	19,133,400	2,900	66.2%	61.6%	7.0%
2014.03	17,833,200	42,900	65,300	190,000	19,158,600	25,200	66.2%	61.7%	6.9%
2014.04	17,804,300	-28,900	7,000	149,200	19,133,000	-25,600	66.1%	61.5%	6.9%
2014.05	17,830,100	25,800	39,800	85,500	19,173,900	40,900	66.1%	61.5%	7.0%
2014.06	17,820,700	-9,400	-12,500	72,300	19,190,200	16,300	66.1%	61.4%	7.1%
2014.07	17,862,400	41,700	58,100	156,800	19,214,900	24,700	66.1%	61.4%	7.0%
2014.08	17,851,400	-11,000	21,300	81,300	19,194,100	-20,800	66.0%	61.3%	7.0%
2014.09	17,925,500	74,100	104,800	150,400	19,223,100	29,000	66.0%	61.5%	6.8%
2014.10	17,968,600	43,100	106,200	181,800	19,227,300	4,200	66.0%	61.6%	6.5%
2014.11	17,957,900	-10,700	106,500	146,000	19,236,600	9,300	66.0%	61.6%	6.6%
Quebec									
2013.11	4,061,600	15,100	57,300	24,900	4,379,100	3,200	65.3%	60.5%	7.3%
2013.12	4,045,500	-16,100	26,600	3,900	4,384,000	4,900	65.3%	60.3%	7.7%
2014.01	4,058,200	12,700	11,700	10,000	4,384,900	900	65.3%	60.4%	7.5%
2014.02	4,032,700	-25,500	-28,900	-2,600	4,375,300	-9,600	65.1%	60.0%	7.8%
2014.03	4,047,800	15,100	2,300	31,400	4,379,100	3,800	65.1%	60.2%	7.6%
2014.04	4,015,800	-32,000	-42,400	-4,800	4,347,400	-31,700	64.6%	59.7%	7.6%
2014.05	4,015,000	-800	-17,700	-24,700	4,364,900	17,500	64.8%	59.6%	8.0%
2014.06	4,018,500	3,500	-29,300	-13,900	4,374,900	10,000	64.9%	59.6%	8.1%
2014.07	4,020,400	1,900	4,600	16,300	4,375,600	700	64.8%	59.6%	8.1%
2014.08	4,024,500	4,100	9,500	20,200	4,361,600	-14,000	64.6%	59.6%	7.7%
2014.09	4,031,000	6,500	12,500	12,100	4,363,800	2,200	64.6%	59.7%	7.6%
2014.10	4,016,800	-14,200	-3,600	-29,700	4,353,800	-10,000	64.4%	59.4%	7.7%
2014.11	4,036,400	19,600	11,900	-25,200	4,369,300	15,500	64.6%	59.7%	7.6%
Ontario									
2013.11	6,907,100	8,300	-11,300	84,500	7,454,100	2,900	66.2%	61.4%	7.3%
2013.12	6,876,800	-30,300	-31,600	20,500	7,466,300	12,200	66.3%	61.0%	7.9%
2014.01	6,882,800	6,000	-16,000	53,800	7,438,200	-28,100	66.0%	61.0%	7.5%
2014.02	6,888,900	6,100	-18,200	28,700	7,448,700	10,500	66.0%	61.0%	7.5%
2014.03	6,902,300	13,400	25,500	60,500	7,449,700	1,000	65.9%	61.1%	7.3%
2014.04	6,919,900	17,600	37,100	73,500	7,475,500	25,800	66.1%	61.2%	7.4%
2014.05	6,934,700	14,800	45,800	39,400	7,483,600	8,100	66.1%	61.2%	7.3%
2014.06	6,900,800	-33,900	-1,500	10,300	7,463,400	-20,200	65.8%	60.9%	7.5%
2014.07	6,940,300	39,500	20,400	60,300	7,500,300	36,900	66.1%	61.2%	7.5%
2014.08	6,932,400	-7,900	-2,300	14,000	7,486,000	-14,300	65.9%	61.1%	7.4%
2014.09	6,957,100	24,700	56,300	48,700	7,487,200	1,200	65.9%	61.2%	7.1%
2014.10	6,994,100	37,000	53,800	95,300	7,484,200	-3,000	65.8%	61.5%	6.5%
2014.11	6,960,200	-33,900	27,800	53,100	7,481,200	-3,000	65.7%	61.1%	7.0%

Source: Statistics Canada, Labour Force Survey

Other Labour Market Indicators

SEASONALLY ADJUSTED DATA	Last publication		-1 MONTH	-3 MONTHS	-6 MONTHS	Same month -1 YEAR
	Month	Level				
CANADA						
Average weekly wages (\$)	September	1,066.91	1,050.29	1,045.89	1,034.34	1,012.16
Average hours worked in the manufacturing sector	September	30.4	30.4	30.4	30.4	30.4
QUEBEC						
Average weekly wages (\$)	September	965.67	940.23	954.16	951.57	942.05
Average hours worked in the manufacturing sector	September	30.0	30.0	30.2	30.0	30.1
ONTARIO						
Average weekly wages (\$)	September	1,096.73	1,083.78	1,070.82	1,062.71	1,035.33
Average hours worked in the manufacturing sector	September	30.1	30.2	30.2	30.2	30.3

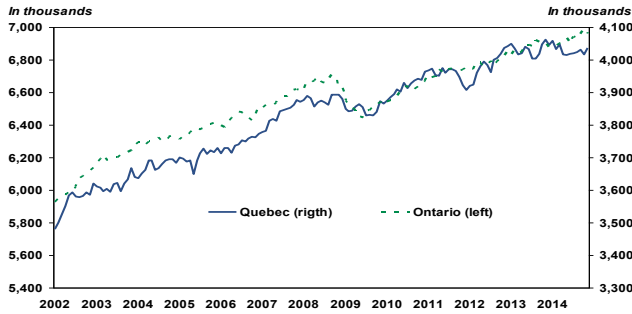
Source: Statistics Canada, Labour Force Survey

Annual Data

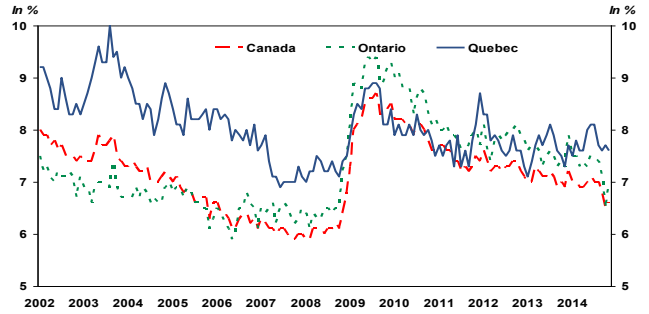
Annual average	2008	2009	2010	2011	2012	2013
CANADA TOTAL JOBS	17,087,400	16,813,100	17,041,000	17,306,200	17,507,700	17,731,200
JOB CREATION	281,800	-274,300	227,900	265,200	201,500	223,500
Job growth (%)	1.7%	-1.6%	1.4%	1.6%	1.2%	1.3%
Unemployment rate	6.1%	8.3%	8.0%	7.5%	7.2%	7.1%
QUEBEC TOTAL JOBS	3,880,400	3,848,400	3,915,100	3,953,600	3,984,400	4,032,200
JOB CREATION	46,300	-32,000	66,700	38,500	30,800	47,800
Job growth (%)	1.2%	-0.8%	1.7%	1.0%	0.8%	1.2%
Unemployment rate	7.2%	8.5%	8.0%	7.8%	7.8%	7.6%
ONTARIO TOTAL JOBS	6,666,300	6,502,000	6,610,000	6,731,300	6,783,800	6,879,400
JOB CREATION	102,000	-164,300	108,000	121,300	52,500	95,600
Job growth (%)	1.6%	-2.5%	1.7%	1.8%	0.8%	1.4%
Unemployment rate	6.5%	9.0%	8.7%	7.8%	7.8%	7.5%

Source: Statistics Canada, Labour Force Survey

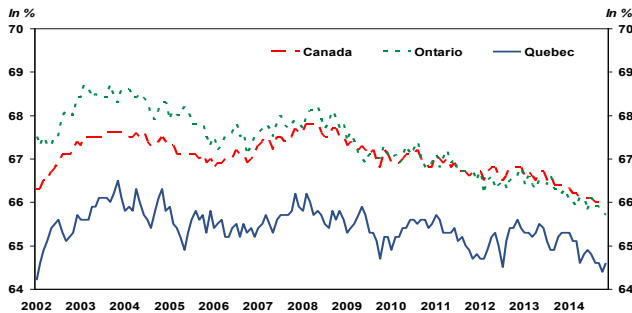
QUEBEC / ONTARIO – Level of employment



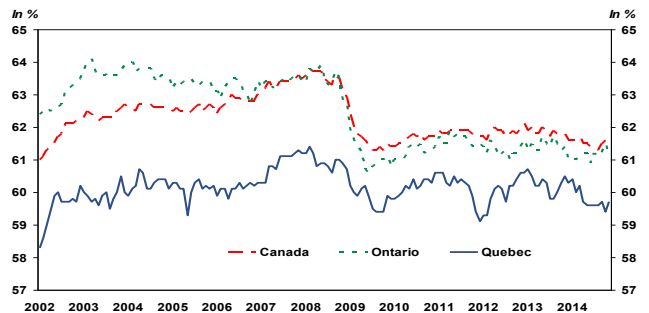
CANADA / QUEBEC / ONTARIO – Unemployment Rate



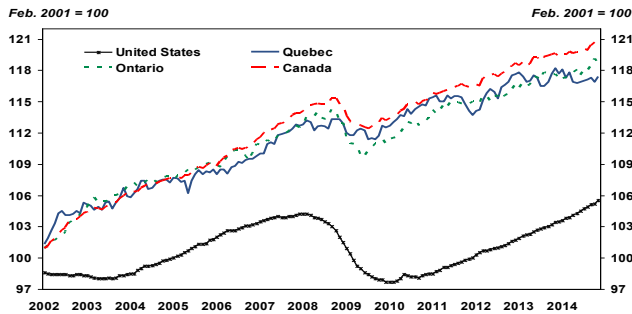
CANADA / QUEBEC / ONTARIO – Participation Rate



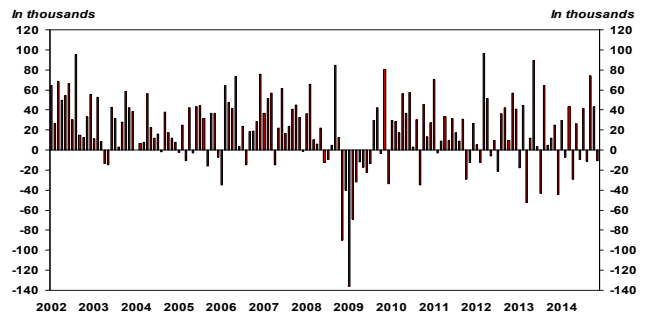
CANADA / QUEBEC / ONTARIO – Employment Rate



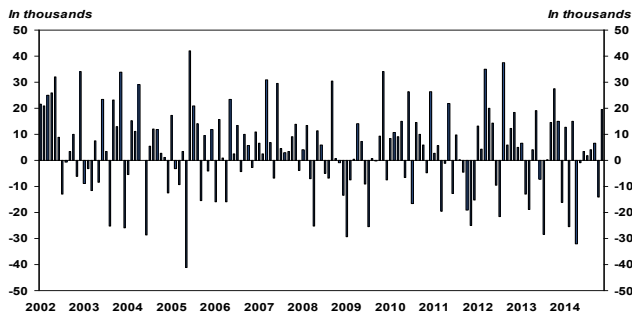
UNITED STATES / CANADA / QUEBEC / ONTARIO – Employment Index



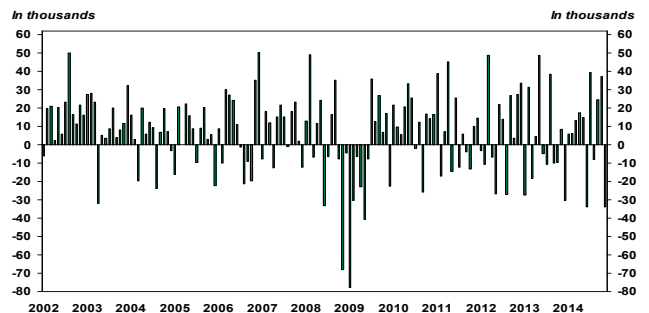
CANADA – Evolution of employment



QUEBEC – Evolution of employment



ONTARIO – Evolution of employment



LABOUR MARKET BY PROVINCE										
SEASONALLY ADJUSTED DATA	November 2014	PREVIOUS MONTHS					Monthly averages			Employment In the last year
		2014.10	2014.09	2014.08	2014.07	3 months	6 months	12 months		
CANADA	JOBS	17,957,900	17,968,600	17,925,500	17,851,400	17,862,400	17,950,667	17,897,750	17,850,800	17,811,900
	CREATION	-10,700	43,100	74,100	-11,000	41,700	35,500	21,300	12,167	146,000
	Unemployment rate	6.6%	6.5%	6.8%	7.0%	7.0%	6.6%	6.8%	6.9%	0.8%*
Newfoundland	JOBS	230,300	227,200	227,900	224,100	226,200	228,467	226,200	228,425	232,300
	CREATION	3,100	-700	3,800	-2,100	4,700	2,067	983	-167	-2,000
	Unemployment rate	10.7%	12.0%	12.7%	13.5%	12.4%	11.8%	12.3%	12.1%	-0.9%*
Prince Edward Island	JOBS	75,000	74,900	74,000	74,500	74,300	74,633	74,483	74,192	73,700
	CREATION	100	900	-500	200	100	167	250	108	1,300
	Unemployment rate	10.5%	9.2%	9.5%	10.0%	9.4%	9.7%	9.7%	10.7%	1.8%*
Nova Scotia	JOBS	449,100	450,400	446,300	447,000	443,100	448,600	447,150	447,808	451,200
	CREATION	-1,300	4,100	-700	3,900	-3,900	700	333	-175	-2,100
	Unemployment rate	8.8%	8.6%	8.6%	8.8%	9.4%	8.7%	8.8%	8.9%	-0.5%*
New Brunswick	JOBS	349,900	351,800	354,100	353,000	349,400	351,933	351,833	352,200	352,000
	CREATION	-1,900	-2,300	1,100	3,600	-3,400	-1,033	-33	-175	-2,100
	Unemployment rate	9.6%	9.3%	9.6%	8.7%	10.0%	9.5%	9.5%	9.7%	-0.6%*
Quebec	JOBS	4,036,400	4,016,800	4,031,000	4,024,500	4,020,400	4,028,067	4,024,600	4,030,217	4,061,600
	CREATION	19,600	-14,200	6,500	4,100	1,900	3,967	3,567	-2,100	-25,200
	Unemployment rate	7.6%	7.7%	7.6%	7.7%	8.1%	7.6%	7.8%	7.8%	-0.6%*
Ontario	JOBS	6,960,200	6,994,100	6,957,100	6,932,400	6,940,300	6,970,467	6,947,483	6,924,192	6,907,100
	CREATION	-33,900	37,000	24,700	-7,900	39,500	9,267	4,250	4,425	53,100
	Unemployment rate	7.0%	6.5%	7.1%	7.4%	7.5%	6.9%	7.2%	7.3%	0.8%*
Manitoba	JOBS	642,000	641,800	633,800	632,600	633,800	639,200	636,017	633,008	631,600
	CREATION	200	8,000	1,200	-1,200	1,700	3,133	2,283	867	10,400
	Unemployment rate	5.1%	5.0%	5.3%	5.5%	5.3%	5.1%	5.3%	5.4%	1.6%*
Saskatchewan	JOBS	572,100	576,000	573,700	566,700	566,500	573,933	569,833	564,533	556,900
	CREATION	-3,900	2,300	7,000	200	2,500	1,800	1,500	1,267	15,200
	Unemployment rate	3.4%	3.5%	3.5%	4.2%	3.2%	3.5%	3.6%	3.8%	2.7%*
Alberta	JOBS	2,296,900	2,293,700	2,290,400	2,269,200	2,282,600	2,293,667	2,286,150	2,271,100	2,246,400
	CREATION	3,200	3,300	21,200	-13,400	-1,500	9,233	3,700	4,208	50,500
	Unemployment rate	4.5%	4.5%	4.4%	4.9%	4.7%	4.5%	4.7%	4.7%	2.2%*
British Columbia	JOBS	2,346,000	2,341,800	2,337,200	2,327,600	2,325,800	2,341,667	2,334,033	2,325,158	2,299,100
	CREATION	4,200	4,600	9,600	1,800	0	6,133	4,483	3,908	46,900
	Unemployment rate	5.8%	6.1%	6.1%	6.1%	5.9%	6.0%	6.0%	6.1%	2.0%*

Source: Statistics Canada, Labour force Survey * Change in employment in the last year