



QUEBEC – ONTARIO

November 4, 2016

Labour market barely advances in Quebec, but makes gains in Ontario

HIGHLIGHTS

- After two sizable monthly increases, Quebec's labour market posted a very slight increase of 3,200 jobs in October.
- Part-time work dominated the month, with 16,000 new jobs. At the same time, 12,800 full-time jobs were lost.
- In Quebec, from September to October, the unemployment rate slipped to 6.8% from 6.9%.
- Employment in Ontario is back above 7 million jobs with a monthly gain of 25,400 new workers.
- As in Quebec, part-time employment was the big winner in October, creating 32,600 jobs, largely outstripping the loss of 7,200 full-time jobs.
- This gain pushed the unemployment rate down from 6.6% to 6.4%, a level last seen in July.

COMMENTS

In October, Quebec's labour market caught its breath after creating 60,200 jobs in August and September. Last month's gains are mainly concentrated in two sectors: other services (+10,700) and construction (+10,400). In Ontario, after the labour market lagged for the first seven months of 2016, we note that October marks the third month of growth in a row. Advances were reported mainly in construction (+15,300) and teaching (+11,700).

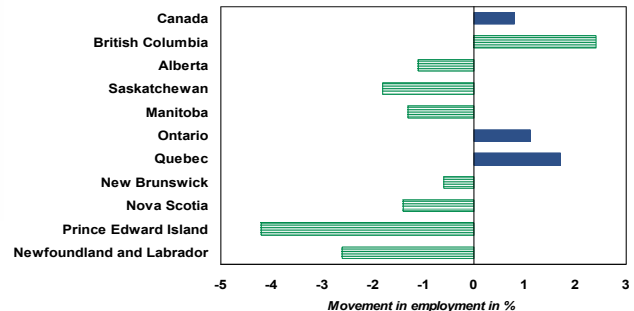
The comparison of average monthly job growth (table) shows that the last three months were more favourable to Quebec and Ontario than the previous six. This firmly translated into an acceleration in pace in August, September and October, compared to that of May, June and July.

Job creation: Average monthly increase

	Last 3 months	Last 6 months	Last 12 months
Quebec	21,133	11,633	5,817
Ontario	17,367	5,567	6,425

Sources: Statistics Canada and Desjardins, Economic Studies

Graph 1 – Quebec, Ontario and British Columbia have dominated the labour market for a year



Sources: Statistics Canada, Labour Force Survey and Desjardins, Études économiques

In addition, for a year now, the labour market has not followed the same trend across Canada. A quick look at the graph is all it takes to see that the dynamic has evolved differently from province to province. As such, Quebec and Ontario fared well, but British Columbia was the most fortunate in terms of employment percentage change from October 2015 to October 2016.

Implications: Data for October show calm in the Quebec labour market and confirmation of an uptrend in Ontario. Even though the gains are essentially in part-time work, they are welcome in a context where economic uncertainty has not entirely dissipated and the pace of employment has fallen for a few months in the United States, which, it is worth remembering, is Canada's principal trade partner.

Joëlle Noreau
Senior Economist

François Dupuis
Vice-President and Chief Economist

Hélène Bégin
Senior Economist

Benoit P. Durocher
Senior Economist

Francis Généreux
Senior Economist

Joëlle Noreau
Senior Economist

418-835-2450 or 1 866 835-8444, ext. 5562450
E-mail: desjardins.economics@desjardins.com

NOTE TO READERS: The letters k, M and B are used in texts and tables to refer to thousands, millions and billions respectively.

IMPORTANT: This document is based on public information and may under no circumstances be used or construed as a commitment by Desjardins Group. While the information provided has been determined on the basis of data obtained from sources that are deemed to be reliable, Desjardins Group in no way warrants that the information is accurate or complete. The document is provided solely for information purposes and does not constitute an offer or solicitation for purchase or sale. Desjardins Group takes no responsibility for the consequences of any decision whatsoever made on the basis of the data contained herein and does not hereby undertake to provide any advice, notably in the area of investment services. The data on prices or margins are provided for information purposes and may be modified at any time, based on such factors as market conditions. The past performances and projections expressed herein are no guarantee of future performance. The opinions and forecasts contained herein are, unless otherwise indicated, those of the document's authors and do not represent the opinions of any other person or the official position of Desjardins Group. Copyright © 2016, Desjardins Group. All rights reserved.

November 4, 2016

Variation by sector - October 2016						
	GAINING Sectors	Balance		LOSING Sectors	Balance	
		1 month	1 year		1 month	1 year
CANADA	Construction	23,800	46,500	Bus., build. and other supp. serv.	-15,000	-9,100
	Trade	18,800	8,100	Accommodation and food services	-9,800	13,900
	Others services	17,800	21,600	Manufacturing	-7,500	-25,400
	Educational services	15,800	34,000	Information, culture and recrea.	-7,300	18,200
QUEBEC	Others services	10,700	20,900	Bus., build. and other supp. serv.	-14,700	700
	Construction	10,400	25,400	Educational services	-7,700	24,800
	Trade	7,400	-8,300	Transportation and warehousing	-3,400	-1,600
	Manufacturing	3,300	7,500	Public administration	-2,800	-16,100
ONTARIO	Construction	15,300	31,200	Information, culture and recrea.	-6,800	9,000
	Educational services	11,700	11,600	Manufacturing	-6,500	-900
	Trade	6,900	-3,700	Health care	-4,000	21,300
	Others services	5,100	-9,300	Bus., build. and other supp. serv.	-2,100	-13,000

Source: LFS, Statistics Canada

Labour Market							
October 2016	NUMBER OF EMPLOYEES	JOB CREATION					
		in numbers					
Seasonally adjusted data	October 2016	Last month	Last 3 months	Since december	Last year	Last year in %	
TOTAL JOBS	Canada	18,160,600	43,900	137,300	149,700	139,600	0.8%
	Quebec	4,170,200	3,200	63,400	60,600	69,800	1.7%
	Ontario	7,018,700	25,400	52,100	52,600	77,100	1.1%
PUBLIC SECTOR EMPLOYEES	Canada	3,632,700	9,800	66,000	30,400	5,600	0.2%
	Quebec	901,200	-11,600	23,500	10,700	10,200	1.1%
	Ontario	1,306,600	10,500	44,000	29,800	23,400	1.8%
PRIVATE SECTOR EMPLOYEES	Canada	11,740,100	34,000	60,200	148,500	101,400	0.9%
	Quebec	2,708,300	9,000	37,700	56,000	47,100	1.8%
	Ontario	4,606,400	-5,000	5,800	37,000	31,700	0.7%
SELF-EMPLOYED	Canada	2,787,900	200	11,200	-29,000	32,700	1.2%
	Quebec	560,700	5,800	2,200	-6,100	12,500	2.3%
	Ontario	1,105,700	19,800	2,300	-14,100	22,000	2.0%

Source: Statistics Canada, Labour Force Survey

Labour Market - Recent trends

Seasonally adjusted data

	Employment in numbers	Job creation in last:			Labour Force Numbers	Variation over 1 month	Participation rate	Employment rate	Unemploy- ment rate
		1 month	3 months	12 months					
Canada									
2015.10	18,021,000	43,100	69,100	142,400	19,376,400	34,400	66.0%	61.3%	7.0%
2015.11	17,988,100	-32,900	16,000	124,800	19,351,900	-24,500	65.8%	61.2%	7.0%
2015.12	18,010,900	22,800	33,000	155,400	19,397,300	45,400	65.9%	61.2%	7.1%
2016.01	18,005,200	-5,700	-15,800	125,500	19,395,500	-1,800	65.9%	61.2%	7.2%
2016.02	18,002,900	-2,300	14,800	117,900	19,413,300	17,800	65.9%	61.1%	7.3%
2016.03	18,043,500	40,600	32,600	129,600	19,428,400	15,100	65.9%	61.2%	7.1%
2016.04	18,041,400	-2,100	36,200	144,000	19,424,600	-3,800	65.8%	61.1%	7.1%
2016.05	18,055,200	13,800	52,300	108,500	19,401,700	-22,900	65.7%	61.1%	6.9%
2016.06	18,054,500	-700	11,000	107,600	19,380,800	-20,900	65.5%	61.0%	6.8%
2016.07	18,023,300	-31,200	-18,100	71,400	19,368,000	-12,800	65.4%	60.9%	6.9%
2016.08	18,049,500	26,200	-5,700	77,400	19,410,700	42,700	65.5%	60.9%	7.0%
2016.09	18,116,700	67,200	62,200	138,800	19,479,700	69,000	65.7%	61.1%	7.0%
2016.10	18,160,600	43,900	137,300	139,600	19,525,700	46,000	65.8%	61.2%	7.0%
Quebec									
2015.10	4,100,400	-6,000	3,600	43,400	4,438,600	-10,100	64.7%	59.8%	7.6%
2015.11	4,098,100	-2,300	3,000	26,700	4,429,100	-9,500	64.6%	59.7%	7.5%
2015.12	4,109,600	11,500	3,200	48,600	4,459,800	30,700	65.0%	59.9%	7.9%
2016.01	4,106,400	-3,200	6,000	30,500	4,445,200	-14,600	64.7%	59.8%	7.6%
2016.02	4,109,800	3,400	11,700	16,600	4,447,400	2,200	64.7%	59.8%	7.6%
2016.03	4,098,600	-11,200	-11,000	300	4,430,100	-17,300	64.5%	59.6%	7.5%
2016.04	4,100,400	1,800	-6,000	-9,500	4,434,600	4,500	64.5%	59.6%	7.5%
2016.05	4,122,000	21,600	12,200	18,200	4,435,400	800	64.5%	59.9%	7.1%
2016.06	4,110,800	-11,200	12,200	33,300	4,418,500	-16,900	64.2%	59.7%	7.0%
2016.07	4,106,800	-4,000	6,400	10,000	4,417,700	-800	64.1%	59.6%	7.0%
2016.08	4,128,700	21,900	6,700	33,600	4,443,000	25,300	64.4%	59.9%	7.1%
2016.09	4,167,000	38,300	56,200	60,600	4,477,300	34,300	64.9%	60.4%	6.9%
2016.10	4,170,200	3,200	63,400	69,800	4,473,700	-3,600	64.8%	60.4%	6.8%
Ontario									
2015.10	6,941,600	30,400	-1,100	9,200	7,446,100	24,000	65.2%	60.8%	6.8%
2015.11	6,933,100	-8,500	-6,800	34,900	7,446,200	100	65.1%	60.6%	6.9%
2015.12	6,966,100	33,000	54,900	84,500	7,466,200	20,000	65.2%	60.9%	6.7%
2016.01	6,985,900	19,800	44,300	100,200	7,491,400	25,200	65.4%	61.0%	6.7%
2016.02	6,974,700	-11,200	41,600	74,100	7,480,700	-10,700	65.2%	60.8%	6.8%
2016.03	6,988,600	13,900	22,500	85,600	7,496,900	16,200	65.3%	60.9%	6.8%
2016.04	6,985,300	-3,300	-600	95,700	7,510,600	13,700	65.4%	60.8%	7.0%
2016.05	7,006,900	21,600	32,200	78,800	7,500,500	-10,100	65.2%	60.9%	6.6%
2016.06	7,002,700	-4,200	14,100	62,600	7,480,400	-20,100	65.0%	60.8%	6.4%
2016.07	6,966,600	-36,100	-18,700	23,900	7,447,000	-33,400	64.6%	60.4%	6.4%
2016.08	6,977,100	10,500	-29,800	37,200	7,477,400	30,400	64.8%	60.4%	6.7%
2016.09	6,993,300	16,200	-9,400	82,100	7,484,600	7,200	64.8%	60.5%	6.6%
2016.10	7,018,700	25,400	52,100	77,100	7,499,600	15,000	64.8%	60.7%	6.4%

Source: Statistics Canada, Labour Force Survey

Other Labour Market Indicators

SEASONALLY ADJUSTED DATA	Last publication		-1 MONTH	-3 MONTHS	-6 MONTHS	Same month -1 YEAR
	Month	Level				
CANADA						
Average weekly wages (\$)	August	1,096.65	1,086.55	1,082.16	1,083.25	1,051.12
Average hours worked in the manufacturing sector	August	30.1	30.1	30.3	30.4	30.2
QUEBEC						
Average weekly wages (\$)	August	1,030.53	1,019.05	999.36	1,008.09	974.18
Average hours worked in the manufacturing sector	August	29.8	30.0	30.1	30.1	30.2
ONTARIO						
Average weekly wages (\$)	August	1,117.10	1,104.99	1,114.65	1,117.47	1,073.88
Average hours worked in the manufacturing sector	August	30.1	30.3	30.4	30.3	30.1

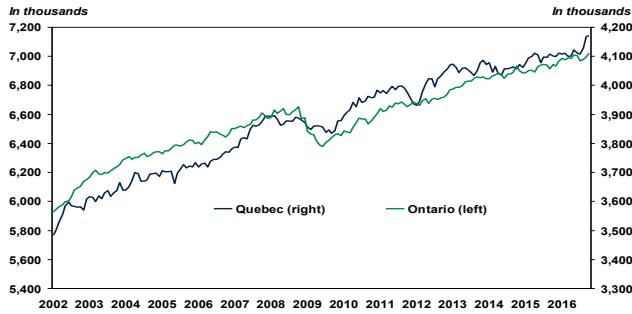
Source: Statistics Canada, Labour Force Survey

Annual Data

Annual average	2010	2011	2012	2013	2014	2015
CANADA TOTAL JOBS	16,964,300	17,221,000	17,438,000	17,691,100	17,802,200	17,946,600
JOB CREATION	236,700	256,700	217,000	253,100	111,100	144,400
Job growth (%)	1.4%	1.5%	1.3%	1.5%	0.6%	0.8%
Unemployment rate	8.1%	7.5%	7.3%	7.1%	6.9%	6.9%
QUEBEC TOTAL JOBS	3,937,900	3,975,600	4,005,900	4,060,800	4,059,700	4,097,000
JOB CREATION	83,700	37,700	30,300	54,900	-1,100	37,300
Job growth (%)	2.2%	1.0%	0.8%	1.4%	-0.0%	0.9%
Unemployment rate	8.0%	7.9%	7.7%	7.6%	7.7%	7.6%
ONTARIO TOTAL JOBS	6,537,800	6,658,400	6,702,600	6,823,400	6,877,900	6,923,200
JOB CREATION	105,100	120,600	44,200	120,800	54,500	45,300
Job growth (%)	1.6%	1.8%	0.7%	1.8%	0.8%	0.7%
Unemployment rate	8.7%	7.9%	7.9%	7.6%	7.3%	6.8%

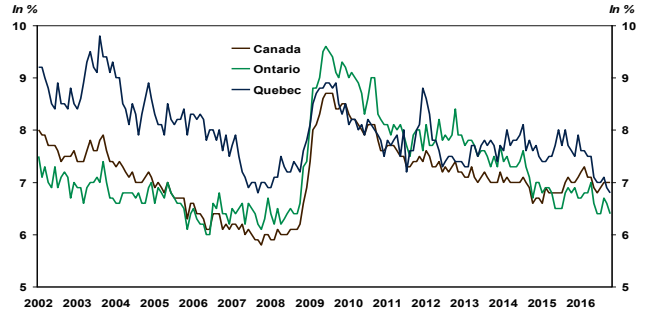
Source: Statistics Canada, Labour Force Survey

QUEBEC / ONTARIO – Level of employment



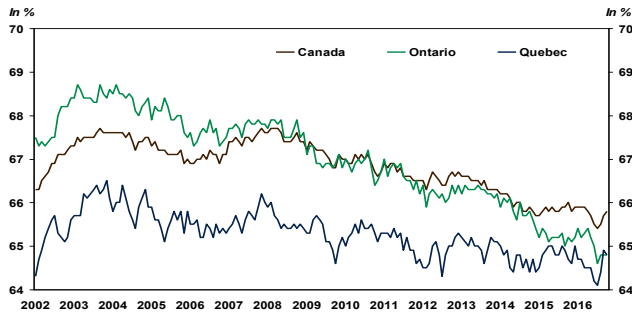
Sources: Statistics Canada and Desjardins, Economic Studies

CANADA / QUEBEC / ONTARIO – Unemployment Rate



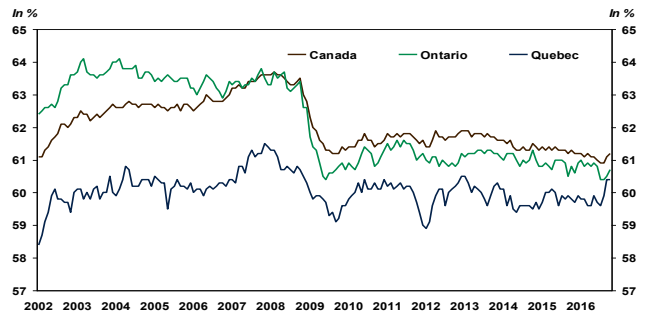
Sources: Statistics Canada and Desjardins, Economic Studies

CANADA / QUEBEC / ONTARIO – Participation Rate



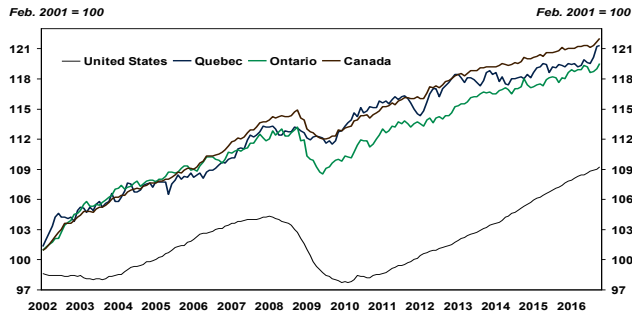
Sources: Statistics Canada and Desjardins, Economic Studies

CANADA / QUEBEC / ONTARIO – Employment Rate



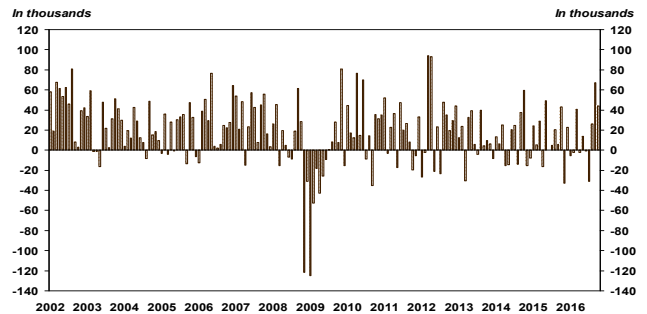
Sources: Statistics Canada and Desjardins, Economic Studies

UNITED STATES / CANADA / QUEBEC / ONTARIO – Employment Index



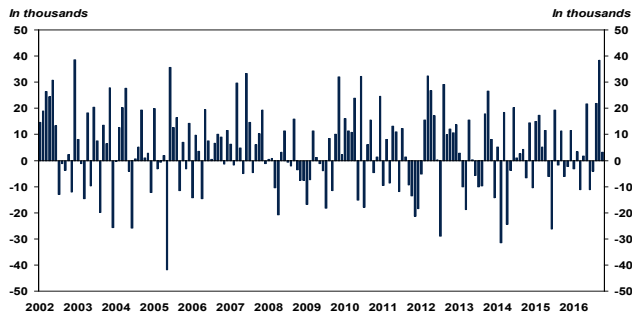
Sources: Statistics Canada and Desjardins, Economic Studies

CANADA – Evolution of employment



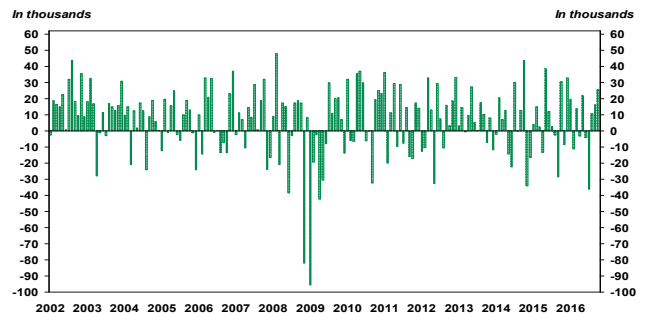
Sources: Statistics Canada and Desjardins, Economic Studies

QUEBEC – Evolution of employment



Sources: Statistics Canada and Desjardins, Economic Studies

ONTARIO – Evolution of employment



Sources: Statistics Canada and Desjardins, Economic Studies

LABOUR MARKET BY PROVINCE

SEASONALLY ADJUSTED DATA		October 2016	PREVIOUS MONTHS				Monthly averages			Employment In the last year
			2016.09	2016.08	2016.07	2016.06	3 months	6 months	12 months	
CANADA	JOB	18,160,600	18,116,700	18,049,500	18,023,300	18,054,500	18,108,933	18,076,633	18,045,983	18,021,000
	CREATION	43,900	67,200	26,200	-31,200	-700	45,767	19,867	11,633	139,600
	Unemployment rate	7.0%	7.0%	7.0%	6.9%	6.8%	7.0%	6.9%	7.0%	0.8%*
Newfoundland	JOB	229,100	234,700	235,900	232,000	237,000	233,233	234,583	233,808	235,200
	CREATION	-5,600	-1,200	3,900	-5,000	-1,800	-967	-1,350	-508	-6,100
	Unemployment rate	14.9%	13.6%	12.3%	12.8%	12.0%	13.6%	12.9%	13.2%	-2.6%*
Prince Edward Island	JOB	71,200	71,400	71,200	71,400	71,400	71,267	71,400	71,742	74,300
	CREATION	-200	200	-200	0	-400	-67	17	-258	-3,100
	Unemployment rate	11.7%	10.8%	12.1%	9.6%	11.0%	11.5%	10.9%	10.7%	-4.2%*
Nova Scotia	JOB	444,300	443,400	445,200	445,300	446,700	444,300	445,167	445,875	450,800
	CREATION	900	-1,800	-100	-1,400	600	-333	-900	-542	-6,500
	Unemployment rate	7.6%	8.1%	8.5%	8.4%	8.2%	8.1%	8.2%	8.4%	-1.4%*
New Brunswick	JOB	353,800	356,000	351,600	354,600	349,600	353,800	352,333	350,967	355,900
	CREATION	-2,200	4,400	-3,000	5,000	1,200	-267	750	-175	-2,100
	Unemployment rate	10.0%	9.3%	9.4%	9.7%	10.3%	9.6%	9.8%	9.6%	-0.6%*
Quebec	JOB	4,170,200	4,167,000	4,128,700	4,106,800	4,110,800	4,155,300	4,134,250	4,119,033	4,100,400
	CREATION	3,200	38,300	21,900	-4,000	-11,200	21,133	11,633	5,817	69,800
	Unemployment rate	6.8%	6.9%	7.1%	7.0%	7.0%	6.9%	7.0%	7.3%	1.7%*
Ontario	JOB	7,018,700	6,993,300	6,977,100	6,966,600	7,002,700	6,996,367	6,994,217	6,983,250	6,941,600
	CREATION	25,400	16,200	10,500	-36,100	-4,200	17,367	5,567	6,425	77,100
	Unemployment rate	6.4%	6.6%	6.7%	6.4%	6.4%	6.6%	6.5%	6.7%	1.1%*
Manitoba	JOB	632,700	631,800	633,900	636,300	636,100	632,800	634,483	633,792	641,200
	CREATION	900	-2,100	-2,400	200	0	-1,200	-83	-708	-8,500
	Unemployment rate	6.4%	6.4%	5.9%	6.2%	6.1%	6.2%	6.2%	6.1%	-1.3%*
Saskatchewan	JOB	566,900	569,300	569,000	569,400	569,900	568,400	568,900	570,117	577,500
	CREATION	-2,400	300	-400	-500	1,000	-833	33	-883	-10,600
	Unemployment rate	6.9%	6.8%	6.3%	6.3%	6.1%	6.7%	6.4%	6.1%	-1.8%*
Alberta	JOB	2,273,200	2,264,200	2,250,900	2,248,200	2,249,600	2,262,767	2,256,267	2,269,942	2,299,400
	CREATION	9,000	13,300	2,700	-1,400	-1,900	8,333	-400	-2,183	-26,200
	Unemployment rate	8.5%	8.5%	8.4%	8.6%	7.9%	8.5%	8.3%	7.8%	-1.1%*
British Columbia	JOB	2,400,400	2,385,500	2,386,100	2,392,700	2,380,600	2,390,667	2,384,983	2,367,433	2,344,800
	CREATION	14,900	-600	-6,600	12,100	16,000	2,567	4,567	4,633	55,600
	Unemployment rate	6.2%	5.7%	5.5%	5.6%	5.9%	5.8%	5.8%	6.1%	2.4%*

Source: Statistics Canada, Labour force Survey * Change in employment in the last year