



QUEBEC – ONTARIO

September 9, 2016

August: a jobs rally in Quebec and feeble catch-up in Ontario

HIGHLIGHTS

- Employment expanded by 21,900 jobs in Quebec in August, after two straight months of decline.
- The unemployment rate ticked up from 7.0% to 7.1% due to a spike in the labour force (+25,300 people).
- In Ontario, the jobs gain was modest: an increase of 10,500 after a substantial drop of 36,100 last July.
- Ontario's unemployment rate climbed by 0.3 percentage point to reach 6.7%. As in Quebec, that increase is attributable to expansion of the labour force (+30,400).

COMMENTS

August was a good news story for Quebec and Ontario in terms of employment. The gains in Quebec were mainly in part-time jobs (+14,800) while in Ontario, full-time jobs predominated (+8,600). In Quebec, the sectors that reported the largest growth were public administration (+10,400) and information, culture and recreation (+8,500). In Ontario, the education sector saw a gain of 21,600 jobs, while losses were recorded in many spheres of activity including management of companies (-11,700).

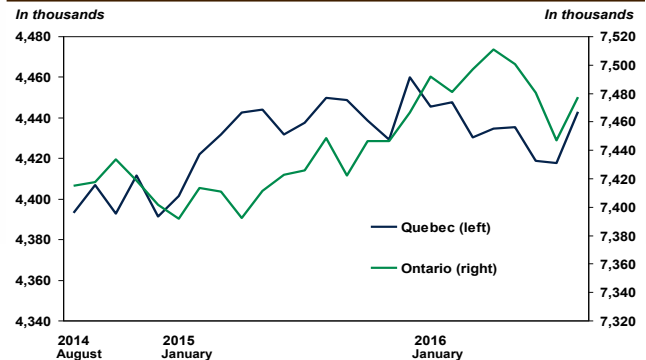
Over the past three months, the labour markets of Quebec and Ontario have followed diverging trajectories: the average monthly job creation was 2,233 in Quebec and -9,933 in Ontario. But the twelve-month average puts Ontario in the lead with 3,100 jobs created every month, while Quebec shows 2,800.

Job creation: Average monthly increase

	Last 3 months	Last 6 months	Last 12 months
Quebec	2,233	3,150	2,800
Ontario	-9,933	400	3,100

Sources: Statistics Canada and Desjardins, Economic Studies

The labour force has contracted in Quebec and Ontario since the beginning of the year



Sources: Statistics Canada and Desjardins, Economic Studies

We note strong labour force growth in both Quebec and Ontario in August. However, that gain partially shores up the erosion damage that has been observed in both provinces since the beginning of the year. In Quebec, between the last labour force peak (December 2015) and August 2016, 16,800 people left it because they lost their jobs or because they stopped looking for one. In Ontario, we observe the same phenomenon. There, between the last labour force peak (January 2016) and August 2016, the ranks were reduced by 14,000 people. We will have to monitor the unemployment rate trend in the months to come, to determine to what extent the anticipated declines stem to a greater degree from job gains, versus labour force contractions.

Implications: Despite the August gains, the labour market has not made any spectacular advances since the beginning of the year. The expectations sparked by a weak loonie, which would supposedly generate job gains in the manufacturing export sector, have yet to be fulfilled. However, the second half of 2016 looks more promising, both in the United States and in Canada. And on this side of the border, infrastructure work will be getting underway. These more favourable conditions should bolster the confidence of employers and job-seekers.

Joëlle Noreau
Senior Economist

François Dupuis
Vice-President and Chief Economist

Hélène Bégin
Senior Economist

Benoit P. Durocher
Senior Economist

Francis Généreux
Senior Economist

Joëlle Noreau
Senior Economist

418-835-2450 or 1 866 835-8444, ext. 5562450
E-mail: desjardins.economics@desjardins.com

NOTE TO READERS: The letters k, M and B are used in texts and tables to refer to thousands, millions and billions respectively.

IMPORTANT: This document is based on public information and may under no circumstances be used or construed as a commitment by Desjardins Group. While the information provided has been determined on the basis of data obtained from sources that are deemed to be reliable, Desjardins Group in no way warrants that the information is accurate or complete. The document is provided solely for information purposes and does not constitute an offer or solicitation for purchase or sale. Desjardins Group takes no responsibility for the consequences of any decision whatsoever made on the basis of the data contained herein and does not hereby undertake to provide any advice, notably in the area of investment services. The data on prices or margins are provided for information purposes and may be modified at any time, based on such factors as market conditions. The past performances and projections expressed herein are no guarantee of future performance. The opinions and forecasts contained herein are, unless otherwise indicated, those of the document's authors and do not represent the opinions of any other person or the official position of Desjardins Group. Copyright © 2016, Desjardins Group. All rights reserved.

September 9, 2016

Variation by sector - August 2016						
	GAINING Sectors	Balance		LOSING Sectors	Balance	
		1 month	1 year		1 month	1 year
CANADA	Public administration	16,300	3,600	Prof. and scient. services	-23,100	6,500
	Trade	11,300	2,200	Bus., build. and other supp. serv.	-8,800	5,900
	Information, culture and recrea.	9,600	47,400	Educational services	-7,200	-50,100
	Health care	8,100	61,700	Agriculture	-3,000	2,900
QUEBEC	Public administration	10,400	-10,000	Prof. and scient. services	-6,500	-13,000
	Information, culture and recrea.	8,500	17,000	Others services	-2,100	-200
	Trade	5,300	-23,400	Manufacturing	-2,000	2,900
	Transportation and warehousing	3,600	-500	Accommodation and food services	-1,200	19,500
ONTARIO	Educational services	21,600	-42,500	Bus., build. and other supp. serv.	-11,700	-9,600
	Construction	7,000	24,400	Accommodation and food services	-7,400	6,800
	Others services	6,000	3,800	Prof. and scient. services	-6,500	8,600
	Health care	5,100	34,200	Manufacturing	-5,000	3,700

Source: LFS, Statistics Canada

Labour Market							
August 2016	NUMBER OF EMPLOYEES	JOB CREATION					
		in numbers					
Seasonally adjusted data	August 2016	Last month	Last 3 months	Since december	Last year	Last year in %	
TOTAL JOBS	Canada	18,049,500	26,200	-5,700	38,600	77,400	0.4%
	Quebec	4,128,700	21,900	6,700	19,100	33,600	0.8%
	Ontario	6,977,100	10,500	-29,800	11,000	37,200	0.5%
PUBLIC SECTOR EMPLOYEES	Canada	3,623,700	57,000	-12,900	21,400	-5,500	-0.2%
	Quebec	887,200	9,500	-3,000	-3,300	-4,700	-0.5%
	Ontario	1,305,200	42,600	-14,400	28,400	-3,700	-0.3%
PRIVATE SECTOR EMPLOYEES	Canada	11,688,200	8,300	11,400	96,600	96,700	0.8%
	Quebec	2,690,600	20,000	14,700	38,300	42,900	1.6%
	Ontario	4,590,200	-10,400	-19,400	20,800	43,800	1.0%
SELF-EMPLOYED	Canada	2,737,600	-39,100	-4,100	-79,300	-13,800	-0.5%
	Quebec	550,800	-7,700	-5,100	-16,000	-4,700	-0.8%
	Ontario	1,081,700	-21,700	3,900	-38,100	-2,900	-0.3%

Source: Statistics Canada, Labour Force Survey

Labour Market - Recent trends Seasonally adjusted data

	Employment in numbers	Job creation in last:			Labour Force Numbers	Variation over 1 month	Participation rate	Employment rate	Unemploy- ment rate
		1 month	3 months	12 months					
Canada									
2015.08	17,972,100	20,200	25,400	190,800	19,325,700	56,500	65.9%	61.3%	7.0%
2015.09	17,977,900	5,800	31,000	159,100	19,342,000	16,300	65.9%	61.2%	7.1%
2015.10	18,021,000	43,100	69,100	142,400	19,376,400	34,400	66.0%	61.3%	7.0%
2015.11	17,988,100	-32,900	16,000	124,800	19,351,900	-24,500	65.8%	61.2%	7.0%
2015.12	18,010,900	22,800	33,000	155,400	19,397,300	45,400	65.9%	61.2%	7.1%
2016.01	18,005,200	-5,700	-15,800	125,500	19,395,500	-1,800	65.9%	61.2%	7.2%
2016.02	18,002,900	-2,300	14,800	117,900	19,413,300	17,800	65.9%	61.1%	7.3%
2016.03	18,043,500	40,600	32,600	129,600	19,428,400	15,100	65.9%	61.2%	7.1%
2016.04	18,041,400	-2,100	36,200	144,000	19,424,600	-3,800	65.8%	61.1%	7.1%
2016.05	18,055,200	13,800	52,300	108,500	19,401,700	-22,900	65.7%	61.1%	6.9%
2016.06	18,054,500	-700	11,000	107,600	19,380,800	-20,900	65.5%	61.0%	6.8%
2016.07	18,023,300	-31,200	-18,100	71,400	19,368,000	-12,800	65.4%	60.9%	6.9%
2016.08	18,049,500	26,200	-5,700	77,400	19,410,700	42,700	65.5%	60.9%	7.0%
Quebec									
2015.08	4,095,100	-1,700	-8,700	35,800	4,449,800	12,200	65.0%	59.8%	8.0%
2015.09	4,106,400	11,300	28,900	42,800	4,448,700	-1,100	64.9%	59.9%	7.7%
2015.10	4,100,400	-6,000	3,600	43,400	4,438,600	-10,100	64.7%	59.8%	7.6%
2015.11	4,098,100	-2,300	3,000	26,700	4,429,100	-9,500	64.6%	59.7%	7.5%
2015.12	4,109,600	11,500	3,200	48,600	4,459,800	30,700	65.0%	59.9%	7.9%
2016.01	4,106,400	-3,200	6,000	30,500	4,445,200	-14,600	64.7%	59.8%	7.6%
2016.02	4,109,800	3,400	11,700	16,600	4,447,400	2,200	64.7%	59.8%	7.6%
2016.03	4,098,600	-11,200	-11,000	300	4,430,100	-17,300	64.5%	59.6%	7.5%
2016.04	4,100,400	1,800	-6,000	-9,500	4,434,600	4,500	64.5%	59.6%	7.5%
2016.05	4,122,000	21,600	12,200	18,200	4,435,400	800	64.5%	59.9%	7.1%
2016.06	4,110,800	-11,200	12,200	33,300	4,418,500	-16,900	64.2%	59.7%	7.0%
2016.07	4,106,800	-4,000	6,400	10,000	4,417,700	-800	64.1%	59.6%	7.0%
2016.08	4,128,700	21,900	6,700	33,600	4,443,000	25,300	64.4%	59.9%	7.1%
Ontario									
2015.08	6,939,900	-2,800	11,800	63,900	7,448,300	22,500	65.3%	60.9%	6.8%
2015.09	6,911,200	-28,700	-28,900	22,600	7,422,100	-26,200	65.0%	60.5%	6.9%
2015.10	6,941,600	30,400	-1,100	9,200	7,446,100	24,000	65.2%	60.8%	6.8%
2015.11	6,933,100	-8,500	-6,800	34,900	7,446,200	100	65.1%	60.6%	6.9%
2015.12	6,966,100	33,000	54,900	84,500	7,466,200	20,000	65.2%	60.9%	6.7%
2016.01	6,985,900	19,800	44,300	100,200	7,491,400	25,200	65.4%	61.0%	6.7%
2016.02	6,974,700	-11,200	41,600	74,100	7,480,700	-10,700	65.2%	60.8%	6.8%
2016.03	6,988,600	13,900	22,500	85,600	7,496,900	16,200	65.3%	60.9%	6.8%
2016.04	6,985,300	-3,300	-600	95,700	7,510,600	13,700	65.4%	60.8%	7.0%
2016.05	7,006,900	21,600	32,200	78,800	7,500,500	-10,100	65.2%	60.9%	6.6%
2016.06	7,002,700	-4,200	14,100	62,600	7,480,400	-20,100	65.0%	60.8%	6.4%
2016.07	6,966,600	-36,100	-18,700	23,900	7,447,000	-33,400	64.6%	60.4%	6.4%
2016.08	6,977,100	10,500	-29,800	37,200	7,477,400	30,400	64.8%	60.4%	6.7%

Source: Statistics Canada, Labour Force Survey

Other Labour Market Indicators

SEASONALLY ADJUSTED DATA	Last publication		-1 MONTH	-3 MONTHS	-6 MONTHS	Same month -1 YEAR
	Month	Level				
CANADA						
Average weekly wages (\$)	June	1,094.50	1,082.16	1,092.47	1,105.73	1,076.66
Average hours worked in the manufacturing sector	June	30.6	30.3	30.4	30.8	30.5
QUEBEC						
Average weekly wages (\$)	June	1,022.60	999.36	1,037.88	1,024.05	990.91
Average hours worked in the manufacturing sector	June	30.4	30.1	30.0	30.2	30.1
ONTARIO						
Average weekly wages (\$)	June	1,125.58	1,114.65	1,114.96	1,143.91	1,105.88
Average hours worked in the manufacturing sector	June	30.7	30.4	30.3	31.0	30.6

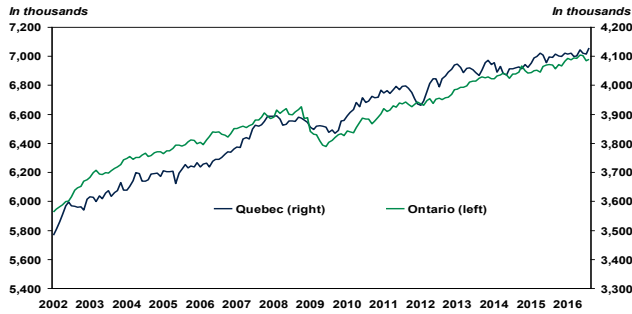
Source: Statistics Canada, Labour Force Survey

Annual Data

Annual average	2010	2011	2012	2013	2014	2015
CANADA TOTAL JOBS						
TOTAL JOBS	16,964,300	17,221,000	17,438,000	17,691,100	17,802,200	17,946,600
JOB CREATION	236,700	256,700	217,000	253,100	111,100	144,400
Job growth (%)	1.4%	1.5%	1.3%	1.5%	0.6%	0.8%
Unemployment rate	8.1%	7.5%	7.3%	7.1%	6.9%	6.9%
QUEBEC TOTAL JOBS						
TOTAL JOBS	3,937,900	3,975,600	4,005,900	4,060,800	4,059,700	4,097,000
JOB CREATION	83,700	37,700	30,300	54,900	-1,100	37,300
Job growth (%)	2.2%	1.0%	0.8%	1.4%	-0.0%	0.9%
Unemployment rate	8.0%	7.9%	7.7%	7.6%	7.7%	7.6%
ONTARIO TOTAL JOBS						
TOTAL JOBS	6,537,800	6,658,400	6,702,600	6,823,400	6,877,900	6,923,200
JOB CREATION	105,100	120,600	44,200	120,800	54,500	45,300
Job growth (%)	1.6%	1.8%	0.7%	1.8%	0.8%	0.7%
Unemployment rate	8.7%	7.9%	7.9%	7.6%	7.3%	6.8%

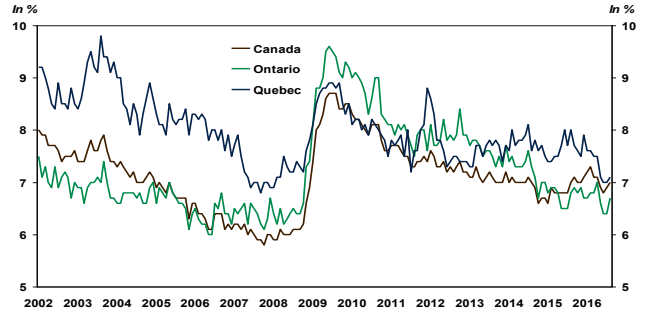
Source: Statistics Canada, Labour Force Survey

QUEBEC / ONTARIO – Level of employment



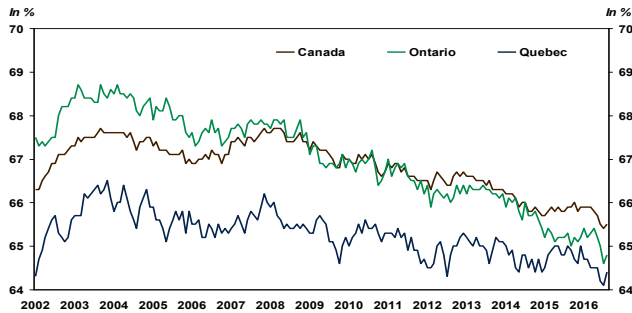
Sources: Statistics Canada and Desjardins, Economic Studies

CANADA / QUEBEC / ONTARIO – Unemployment Rate



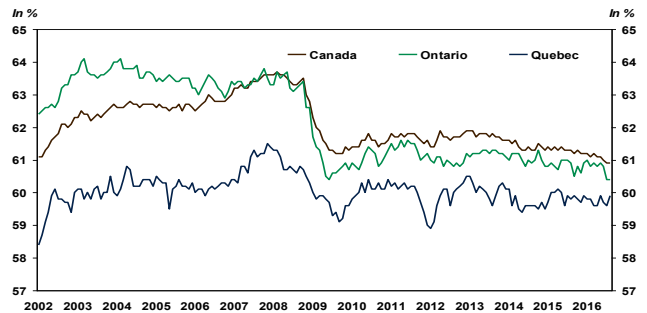
Sources: Statistics Canada and Desjardins, Economic Studies

CANADA / QUEBEC / ONTARIO – Participation Rate



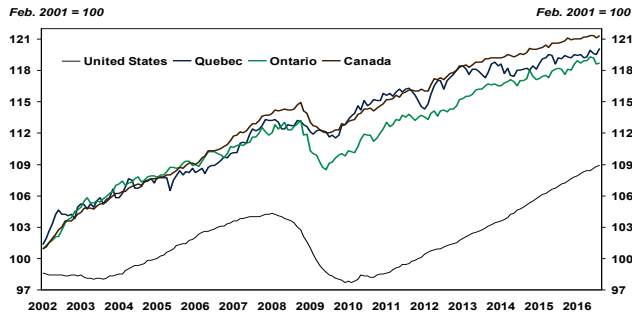
Sources: Statistics Canada and Desjardins, Economic Studies

CANADA / QUEBEC / ONTARIO – Employment Rate



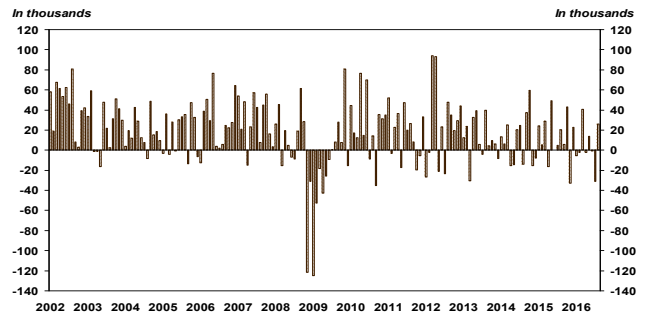
Sources: Statistics Canada and Desjardins, Economic Studies

UNITED STATES / CANADA / QUEBEC / ONTARIO – Employment Index



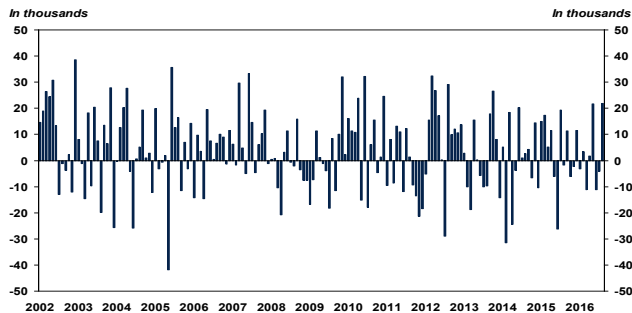
Sources: Statistics Canada and Desjardins, Economic Studies

CANADA – Evolution of employment



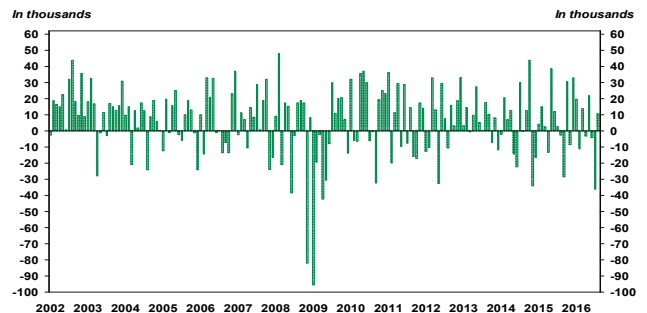
Sources: Statistics Canada and Desjardins, Economic Studies

QUEBEC – Evolution of employment



Sources: Statistics Canada and Desjardins, Economic Studies

ONTARIO – Evolution of employment



Sources: Statistics Canada and Desjardins, Economic Studies

LABOUR MARKET BY PROVINCE

SEASONALLY ADJUSTED DATA		August 2016	PREVIOUS MONTHS				Monthly averages			Employment In the last year
			2016.07	2016.06	2016.05	2016.04	3 months	6 months	12 months	
CANADA	JOB	18,049,500	18,023,300	18,054,500	18,055,200	18,041,400	18,042,433	18,044,567	18,022,783	17,972,100
	CREATION	26,200	-31,200	-700	13,800	-2,100	-1,900	7,767	6,450	77,400
	Unemployment rate	7.0%	6.9%	6.8%	6.9%	7.1%	6.9%	7.0%	7.0%	0.4%*
Newfoundland	JOB	235,900	232,000	237,000	238,800	237,200	234,967	235,333	234,383	239,200
	CREATION	3,900	-5,000	-1,800	1,600	6,100	-967	733	-275	-3,300
	Unemployment rate	12.3%	12.8%	12.0%	11.7%	12.5%	12.4%	12.4%	13.1%	-1.4%*
Prince Edward Island	JOB	71,200	71,400	71,400	71,800	71,100	71,333	71,333	72,158	72,300
	CREATION	-200	0	-400	700	0	-200	-100	-92	-1,100
	Unemployment rate	12.1%	9.6%	11.0%	10.4%	11.5%	10.9%	10.9%	10.4%	-1.5%*
Nova Scotia	JOB	445,200	445,300	446,700	446,100	449,700	445,733	446,783	447,008	448,100
	CREATION	-100	-1,400	600	-3,600	2,000	-300	150	-242	-2,900
	Unemployment rate	8.5%	8.4%	8.2%	8.3%	8.3%	8.4%	8.5%	8.5%	-0.6%*
New Brunswick	JOB	351,600	354,600	349,600	348,400	349,300	351,933	349,817	350,775	350,700
	CREATION	-3,000	5,000	1,200	-900	3,900	1,067	933	75	900
	Unemployment rate	9.4%	9.7%	10.3%	9.9%	9.6%	9.8%	9.9%	9.5%	0.3%*
Quebec	JOB	4,128,700	4,106,800	4,110,800	4,122,000	4,100,400	4,115,433	4,111,217	4,108,167	4,095,100
	CREATION	21,900	-4,000	-11,200	21,600	1,800	2,233	3,150	2,800	33,600
	Unemployment rate	7.1%	7.0%	7.0%	7.1%	7.5%	7.0%	7.2%	7.4%	0.8%*
Ontario	JOB	6,977,100	6,966,600	7,002,700	7,006,900	6,985,300	6,982,133	6,987,867	6,969,983	6,939,900
	CREATION	10,500	-36,100	-4,200	21,600	-3,300	-9,933	400	3,100	37,200
	Unemployment rate	6.7%	6.4%	6.4%	6.6%	7.0%	6.5%	6.7%	6.7%	0.5%*
Manitoba	JOB	633,900	636,300	636,100	636,100	633,200	635,433	635,300	635,050	635,600
	CREATION	-2,400	200	0	2,900	-3,000	-733	533	-142	-1,700
	Unemployment rate	5.9%	6.2%	6.1%	5.9%	6.1%	6.1%	6.0%	5.9%	-0.3%*
Saskatchewan	JOB	569,000	569,400	569,900	568,900	566,700	569,433	568,700	571,542	573,500
	CREATION	-400	-500	1,000	2,200	-1,600	33	583	-375	-4,500
	Unemployment rate	6.3%	6.3%	6.1%	6.0%	6.3%	6.2%	6.2%	5.9%	-0.8%*
Alberta	JOB	2,250,900	2,248,200	2,249,600	2,251,500	2,275,600	2,249,567	2,262,033	2,276,050	2,304,300
	CREATION	2,700	-1,400	-1,900	-24,100	-20,800	-200	-4,433	-4,450	-53,400
	Unemployment rate	8.4%	8.6%	7.9%	7.8%	7.2%	8.3%	7.8%	7.5%	-2.3%*
British Columbia	JOB	2,386,100	2,392,700	2,380,600	2,364,600	2,373,000	2,386,467	2,376,167	2,357,675	2,313,500
	CREATION	-6,600	12,100	16,000	-8,400	13,000	7,167	5,850	6,050	72,600
	Unemployment rate	5.5%	5.6%	5.9%	6.1%	5.8%	5.7%	5.9%	6.2%	3.1%*

Source: Statistics Canada, Labour force Survey * Change in employment in the last year