



## QUEBEC – ONTARIO

March 11, 2016

### Employment in February: Quebec scores a few points, Ontario loses steam

#### HIGHLIGHTS

- This morning, Statistics Canada announced the creation of 3,400 jobs in Quebec for February.
- The unemployment rate is steady at 7.6%.
- Ontario reported a decrease of 11,200 jobs last month. This follows two months of significant gains (+52,800 jobs in December and January).
- Ontario's unemployment rate went from 6.7% to 6.8%.

#### COMMENTS

February 2016 will not go down in history, with employment data seesawing in Quebec for the past four months. February's increase therefore overshadows January's 3,200 loss. Ontario saw the pendulum swing the other way with February's decrease, after 52,800 jobs were created in December and January.

In December, January and February, Quebec posted an average monthly gain of 3,900 jobs, outperforming the last six months (table). The average monthly increase for the last 3 months in Ontario is clearly higher than the 6- and 12-month averages.

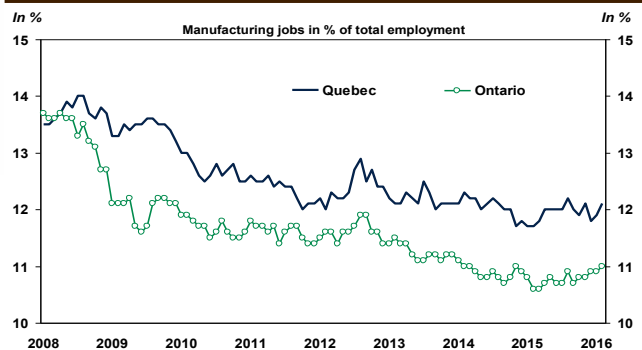
A glance at the manufacturing sector shows that since the recession, the number of jobs lost in the sector has less bearing on total employment, both in Ontario and Quebec

#### Job creation: Average monthly increase

	Last 3 months	Last 6 months	Last 12 months
Quebec	3,900	2,450	1,383
Ontario	13,867	5,800	6,175

Sources: Statistics Canada and Desjardins, Economic Studies

#### Manufacturing employment share has fallen more in Ontario than in Quebec since 2008



Sources: Statistics Canada and Desjardins, Economic Studies

(graph). In addition to this observation, two points draw our attention. First, contrary to what we might have believed beforehand, Quebec has a greater share of manufacturing employment than Ontario. Second, Quebec's share of manufacturing employment has been stagnating since mid-July 2013, while it has fallen very gradually in Ontario. At a time when we are rediscovering the important contribution of this sector of the economy, it will be interesting to see if the current trends will be reversed, or if productivity gains will limit job growth.

**Implications:** This morning's data will not change the economic landscape. Obviously, there are only two months of employment data for this year, which is not enough to predict what's in store for the rest of the year. The strength of the U.S. economy and the weakness of the Canadian dollar could increase exports from Quebec and Ontario. These factors could help strengthen the manufacturing sector on this side of the border and, by extension, employment. The coming months will show to what extent this assumption proves to be right.

**Joëlle Noreau**  
Senior Economist

**François Dupuis**  
Vice-President and Chief Economist

**Hélène Bégin**  
Senior Economist

**Benoit P. Durocher**  
Senior Economist

**Francis Généreux**  
Senior Economist

**Joëlle Noreau**  
Senior Economist

418-835-2450 or 1 866 835-8444, ext. 2450  
E-mail: [desjardins.economics@desjardins.com](mailto:desjardins.economics@desjardins.com)

March 11, 2016

Variation by sector - February 2016						
	GAINING Sectors	Balance		LOSING Sectors	Balance	
		1 month	1 year		1 month	1 year
<b>CANADA</b>	Construction	34,000	-6,100	Health care	-19,600	60,500
	Bus., build. and other supp. serv.	12,700	20,900	Educational services	-16,900	-22,800
	Trade	11,300	18,100	Others services	-14,900	-900
	Manufacturing	7,600	41,300	Accommodation and food services	-11,200	-48,400
<b>QUEBEC</b>	Construction	13,000	-7,400	Others services	-6,400	9,400
	Manufacturing	3,400	15,000	Health care	-3,900	6,600
	Information, culture and recrea.	2,400	900	Accommodation and food services	-3,000	-5,600
	Fin., insurance and real estate	2,300	-6,500	Agriculture	-2,900	900
<b>ONTARIO</b>	Bus., build. and other supp. serv.	14,800	2,600	Others services	-7,900	-6,500
	Manufacturing	10,700	32,700	Educational services	-7,700	-10,800
	Construction	10,700	14,500	Accommodation and food services	-7,200	-2,200
	Agriculture	3,600	5,700	Trade	-6,900	-19,800

Source: LFS, Statistics Canada

Labour Market							
February 2016	NUMBER OF EMPLOYEES	JOB CREATION					
		in numbers					
Seasonally adjusted data	February 2016	Last month	Last 3 months	Since december	Last year	Last year in %	
<b>TOTAL JOBS</b>	Canada	18,002,900	-2,300	14,800	-8,000	117,900	0.7%
	Quebec	4,109,800	3,400	11,700	200	16,600	0.4%
	Ontario	6,974,700	-11,200	41,600	8,600	74,100	1.1%
<b>PUBLIC SECTOR EMPLOYEES</b>	Canada	3,600,600	-20,400	-9,900	-1,700	17,300	0.5%
	Quebec	877,500	-5,100	2,700	-13,000	-8,200	-0.9%
	Ontario	1,310,300	7,300	25,400	33,500	300	0.0%
<b>PRIVATE SECTOR EMPLOYEES</b>	Canada	11,602,700	15,200	4,400	11,100	64,100	0.6%
	Quebec	2,679,800	14,000	8,400	27,500	37,800	1.4%
	Ontario	4,553,500	-29,500	17,200	-15,900	51,700	1.1%
<b>SELF-EMPLOYED</b>	Canada	2,799,700	3,000	20,400	-17,200	36,600	1.3%
	Quebec	552,500	-5,400	600	-14,300	-13,000	-2.3%
	Ontario	1,110,800	10,900	-1,100	-9,000	22,000	2.0%

Source: Statistics Canada, Labour Force Survey

## Labour Market - Recent trends Seasonally adjusted data

	Employment in numbers	Job creation in last:			Labour Force Numbers	Variation over 1 month	Participation rate	Employment rate	Unemploy- ment rate
		1 month	3 months	12 months					
<b>Canada</b>									
2015.02	17,885,000	5,300	21,700	129,700	19,200,700	54,000	65.8%	61.3%	6.9%
2015.03	17,913,900	28,900	58,400	133,400	19,229,300	28,600	65.9%	61.4%	6.8%
2015.04	17,897,400	-16,500	17,700	132,400	19,212,400	-16,900	65.8%	61.3%	6.8%
2015.05	17,946,700	49,300	61,700	196,400	19,255,800	43,400	65.9%	61.4%	6.8%
2015.06	17,946,900	200	33,000	176,400	19,256,700	900	65.8%	61.3%	6.8%
2015.07	17,951,900	5,000	54,500	156,700	19,269,200	12,500	65.8%	61.3%	6.8%
2015.08	17,972,100	20,200	25,400	190,800	19,325,700	56,500	65.9%	61.3%	7.0%
2015.09	17,977,900	5,800	31,000	159,100	19,342,000	16,300	65.9%	61.2%	7.1%
2015.10	18,021,000	43,100	69,100	142,400	19,376,400	34,400	66.0%	61.3%	7.0%
2015.11	17,988,100	-32,900	16,000	124,800	19,351,900	-24,500	65.8%	61.2%	7.0%
2015.12	18,010,900	22,800	33,000	155,400	19,397,300	45,400	65.9%	61.2%	7.1%
2016.01	18,005,200	-5,700	-15,800	125,500	19,395,500	-1,800	65.9%	61.2%	7.2%
2016.02	18,002,900	-2,300	14,800	117,900	19,413,300	17,800	65.9%	61.1%	7.3%
<b>Quebec</b>									
2015.02	4,093,200	17,300	21,800	47,900	4,421,800	20,600	64.8%	60.0%	7.4%
2015.03	4,098,300	5,100	37,300	34,600	4,431,600	9,800	64.9%	60.0%	7.5%
2015.04	4,109,900	11,600	34,000	70,700	4,442,600	11,000	65.0%	60.1%	7.5%
2015.05	4,103,800	-6,100	10,600	68,300	4,443,900	1,300	65.0%	60.0%	7.7%
2015.06	4,077,500	-26,300	-20,800	21,800	4,431,800	-12,100	64.8%	59.6%	8.0%
2015.07	4,096,800	19,300	-13,100	40,100	4,437,600	5,800	64.8%	59.9%	7.7%
2015.08	4,095,100	-1,700	-8,700	35,800	4,449,800	12,200	65.0%	59.8%	8.0%
2015.09	4,106,400	11,300	28,900	42,800	4,448,700	-1,100	64.9%	59.9%	7.7%
2015.10	4,100,400	-6,000	3,600	43,400	4,438,600	-10,100	64.7%	59.8%	7.6%
2015.11	4,098,100	-2,300	3,000	26,700	4,429,100	-9,500	64.6%	59.7%	7.5%
2015.12	4,109,600	11,500	3,200	48,600	4,459,800	30,700	65.0%	59.9%	7.9%
2016.01	4,106,400	-3,200	6,000	30,500	4,445,200	-14,600	64.7%	59.8%	7.6%
2016.02	4,109,800	3,400	11,700	16,600	4,447,400	2,200	64.7%	59.8%	7.6%
<b>Ontario</b>									
2015.02	6,900,600	14,900	2,400	37,000	7,413,100	21,300	65.4%	60.9%	6.9%
2015.03	6,903,000	2,400	21,400	32,500	7,410,900	-2,200	65.3%	60.8%	6.9%
2015.04	6,889,600	-13,400	3,900	6,500	7,392,200	-18,700	65.1%	60.7%	6.8%
2015.05	6,928,100	38,500	27,500	59,300	7,411,100	18,900	65.2%	61.0%	6.5%
2015.06	6,940,100	12,000	37,100	93,700	7,422,600	11,500	65.2%	61.0%	6.5%
2015.07	6,942,700	2,600	53,100	66,300	7,425,800	3,200	65.2%	61.0%	6.5%
2015.08	6,939,900	-2,800	11,800	63,900	7,448,300	22,500	65.3%	60.9%	6.8%
2015.09	6,911,200	-28,700	-28,900	22,600	7,422,100	-26,200	65.0%	60.5%	6.9%
2015.10	6,941,600	30,400	-1,100	9,200	7,446,100	24,000	65.2%	60.8%	6.8%
2015.11	6,933,100	-8,500	-6,800	34,900	7,446,200	100	65.1%	60.6%	6.9%
2015.12	6,966,100	33,000	54,900	84,500	7,466,200	20,000	65.2%	60.9%	6.7%
2016.01	6,985,900	19,800	44,300	100,200	7,491,400	25,200	65.4%	61.0%	6.7%
2016.02	6,974,700	-11,200	41,600	74,100	7,480,700	-10,700	65.2%	60.8%	6.8%

Source: Statistics Canada, Labour Force Survey

## Other Labour Market Indicators

SEASONALLY ADJUSTED DATA	Last publication		-1 MONTH	-3 MONTHS	-6 MONTHS	Same month -1 YEAR
	Month	Level				
<b>CANADA</b>						
Average weekly wages (\$)	December	1,104.61	1,086.86	1,080.66	1,077.35	1,043.58
Average hours worked in the manufacturing sector	December	30.7	30.4	30.5	30.5	30.5
<b>QUEBEC</b>						
Average weekly wages (\$)	December	1,015.48	990.20	992.04	990.98	978.49
Average hours worked in the manufacturing sector	December	30.2	30.0	30.1	30.0	30.2
<b>ONTARIO</b>						
Average weekly wages (\$)	December	1,139.58	1,121.82	1,109.12	1,107.76	1,067.75
Average hours worked in the manufacturing sector	December	30.9	30.5	30.6	30.6	30.3

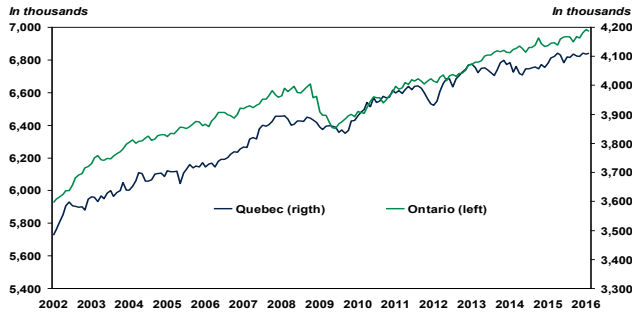
Source: Statistics Canada, Labour Force Survey

## Annual Data

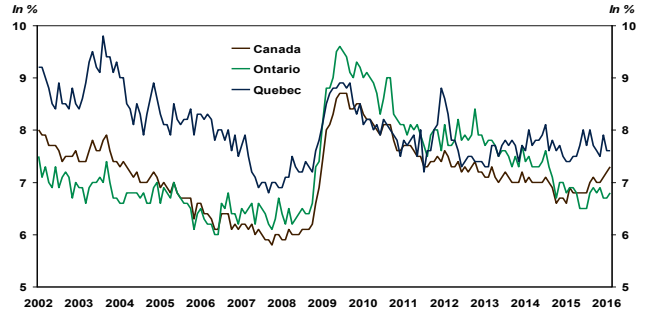
Annual average	2010	2011	2012	2013	2014	2015
<b>CANADA TOTAL JOBS</b>	16,964,300	17,221,000	17,438,000	17,691,100	17,802,200	17,946,600
<b>JOB CREATION</b>	236,700	256,700	217,000	253,100	111,100	144,400
<b>Job growth (%)</b>	1.4%	1.5%	1.3%	1.5%	0.6%	0.8%
<b>Unemployment rate</b>	8.1%	7.5%	7.3%	7.1%	6.9%	6.9%
<b>QUEBEC TOTAL JOBS</b>	3,937,900	3,975,600	4,005,900	4,060,800	4,059,700	4,097,000
<b>JOB CREATION</b>	83,700	37,700	30,300	54,900	-1,100	37,300
<b>Job growth (%)</b>	2.2%	1.0%	0.8%	1.4%	-0.0%	0.9%
<b>Unemployment rate</b>	8.0%	7.9%	7.7%	7.6%	7.7%	7.6%
<b>ONTARIO TOTAL JOBS</b>	6,537,800	6,658,400	6,702,600	6,823,400	6,877,900	6,923,200
<b>JOB CREATION</b>	105,100	120,600	44,200	120,800	54,500	45,300
<b>Job growth (%)</b>	1.6%	1.8%	0.7%	1.8%	0.8%	0.7%
<b>Unemployment rate</b>	8.7%	7.9%	7.9%	7.6%	7.3%	6.8%

Source: Statistics Canada, Labour Force Survey

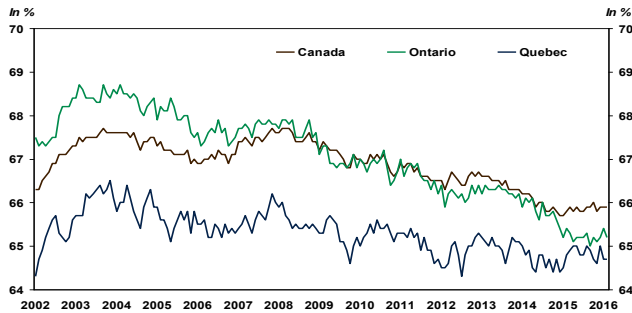
**QUEBEC / ONTARIO – Level of employment**



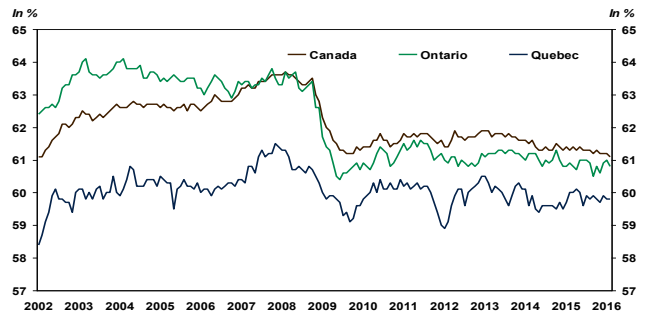
**CANADA / QUEBEC / ONTARIO – Unemployment Rate**



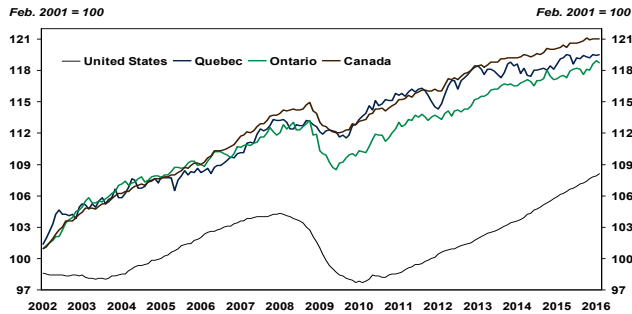
**CANADA / QUEBEC / ONTARIO – Participation Rate**



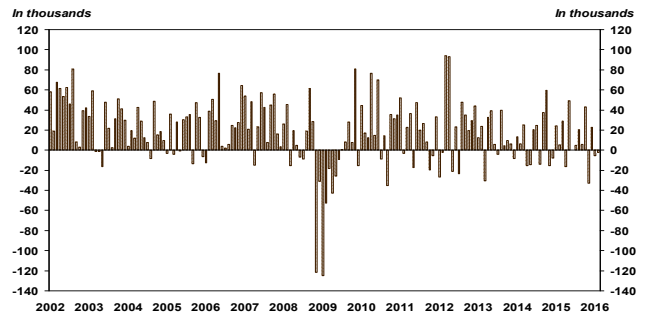
**CANADA / QUEBEC / ONTARIO – Employment Rate**



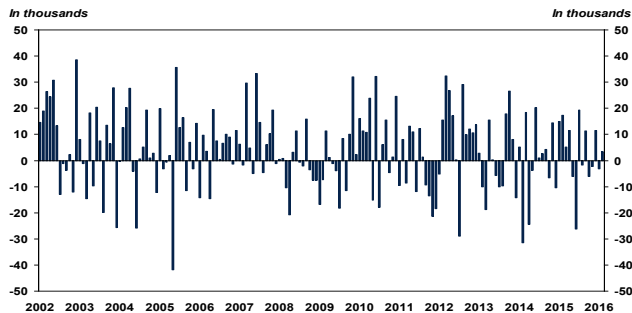
**UNITED STATES / CANADA / QUEBEC / ONTARIO – Employment Index**



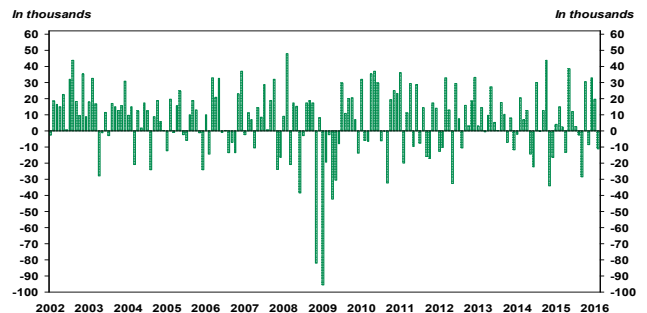
**CANADA – Evolution of employment**



**QUEBEC – Evolution of employment**



**ONTARIO – Evolution of employment**



<b>LABOUR MARKET BY PROVINCE</b>										
SEASONALLY ADJUSTED DATA		February 2016	PREVIOUS MONTHS				Monthly averages			Employment In the last year
			2016.01	2015.12	2015.11	2015.10	3 months	6 months	12 months	
CANADA	JOB	18,002,900	18,005,200	18,010,900	17,988,100	18,021,000	18,006,333	18,001,000	17,969,575	17,885,000
	CREATION	-2,300	-5,700	22,800	-32,900	43,100	4,933	5,133	9,825	117,900
	Unemployment rate	7.3%	7.2%	7.1%	7.0%	7.0%	7.2%	7.1%	7.0%	0.7%*
Newfoundland	JOB	231,500	230,400	232,800	235,200	235,200	231,567	233,433	234,975	235,700
	CREATION	1,100	-2,400	-2,400	0	-300	-1,233	-1,283	-350	-4,200
	Unemployment rate	14.1%	14.4%	14.4%	13.1%	13.2%	14.3%	13.8%	13.2%	-1.8%*
Prince Edward Island	JOB	71,800	72,400	72,800	73,300	74,300	72,333	72,983	72,858	74,000
	CREATION	-600	-400	-500	-1,000	1,000	-500	-83	-183	-2,200
	Unemployment rate	11.0%	9.5%	9.8%	10.3%	9.9%	10.1%	10.0%	10.4%	-3.0%*
Nova Scotia	JOB	444,300	443,500	445,900	448,400	450,800	444,567	447,233	447,125	447,000
	CREATION	800	-2,400	-2,500	-2,400	300	-1,367	-633	-225	-2,700
	Unemployment rate	9.1%	8.5%	8.6%	8.6%	7.8%	8.7%	8.6%	8.6%	-0.6%*
New Brunswick	JOB	346,000	351,700	352,800	352,400	355,900	350,167	351,733	351,367	352,000
	CREATION	-5,700	-1,100	400	-3,500	4,300	-2,133	-783	-500	-6,000
	Unemployment rate	9.9%	9.3%	8.9%	8.6%	9.0%	9.4%	9.1%	9.6%	-1.7%*
Quebec	JOB	4,109,800	4,106,400	4,109,600	4,098,100	4,100,400	4,108,600	4,105,117	4,101,008	4,093,200
	CREATION	3,400	-3,200	11,500	-2,300	-6,000	3,900	2,450	1,383	16,600
	Unemployment rate	7.6%	7.6%	7.9%	7.5%	7.6%	7.7%	7.7%	7.7%	0.4%*
Ontario	JOB	6,974,700	6,985,900	6,966,100	6,933,100	6,941,600	6,975,567	6,952,100	6,938,000	6,900,600
	CREATION	-11,200	19,800	33,000	-8,500	30,400	13,867	5,800	6,175	74,100
	Unemployment rate	6.8%	6.7%	6.7%	6.9%	6.8%	6.7%	6.8%	6.7%	1.1%*
Manitoba	JOB	630,700	628,700	634,000	635,800	641,200	631,133	634,800	635,400	635,000
	CREATION	2,000	-5,300	-1,800	-5,400	2,800	-1,700	-817	-358	-4,300
	Unemployment rate	6.0%	6.1%	5.9%	6.1%	5.4%	6.0%	5.8%	5.7%	-0.7%*
Saskatchewan	JOB	565,500	573,300	575,100	579,100	577,500	571,300	574,383	574,167	566,600
	CREATION	-7,800	-1,800	-4,000	1,600	1,700	-4,533	-1,333	-92	-1,100
	Unemployment rate	5.9%	5.6%	5.5%	5.4%	5.7%	5.7%	5.6%	5.2%	-0.2%*
Alberta	JOB	2,277,500	2,276,100	2,286,100	2,290,000	2,299,400	2,279,900	2,290,067	2,296,958	2,298,700
	CREATION	1,400	-10,000	-3,900	-9,400	-11,900	-4,167	-4,467	-1,767	-21,200
	Unemployment rate	7.9%	7.4%	7.0%	6.9%	6.6%	7.4%	7.1%	6.5%	-0.9%*
British Columbia	JOB	2,351,000	2,336,900	2,335,700	2,342,700	2,344,800	2,341,200	2,339,183	2,317,733	2,282,200
	CREATION	14,100	1,200	-7,000	-2,100	20,800	2,767	6,250	5,733	68,800
	Unemployment rate	6.6%	6.6%	6.7%	6.2%	6.4%	6.6%	6.5%	6.3%	3.0%*

Source: Statistics Canada, Labour force Survey \* Change in employment in the last year