

Name: _____

Date: _____

SAVING PLAY TO SAVE



- 1- Before you start the game, place each deck of cards face down next to the board.
- 2- Each player starts off with 100 points.
- 3- Players take turns rolling the dice and moving forward the number of spaces indicated by the dice.
- 4- Players read and follow the instructions on the space on which they land.
 - a. Challenge space: The person to the player's left draws a Challenge card and reads the question. If the player answers correctly, the player wins the dollar amount indicated on the card. If the player answers incorrectly, the player moves back the number of spaces indicated on the card.
 - b. Chance card: The player draws a Chance card and pays the amount indicated.
 - c. Savings card: The player draws a Savings card and receives the amount indicated.
- 5- When players move on to the next grade, they receive 25 points. Players don't have to land on the \$\$ space to collect their points; they just have to pass over it.
- 6- To win the game, a player must have 500 points to pay for a school trip. If a player lands on the last space and doesn't have enough points, follow these instructions:
 - a. A student with 100 points or fewer goes back to 2rd grade.
 - b. A student with 101 to 200 points goes back to 3rd grade.
 - c. A student with 201 to 300 points goes back to 4th grade.
 - d. A student with 301 to 400 points goes back to 5th grade.
 - e. A student with 401 to 499 points goes back to 6th grade.

Name: _____

Date: _____

SAVING PLAY TO SAVE

CHALLENGE CARDS - STUDENTS

Create your own Challenge Cards and write the answers.



CHALLENGE CARD-STUDENT

Q: _____

A: _____

CORRECT 25 50 75 100 INCORRECT 1 2 3 4

CHALLENGE CARD-STUDENT

Q: _____

A: _____

CORRECT 25 50 75 100 INCORRECT 1 2 3 4

CHALLENGE CARD-STUDENT

Q: _____

A: _____

CORRECT 25 50 75 100 INCORRECT 1 2 3 4

CHALLENGE CARD-STUDENT

Q: _____

A: _____

CORRECT 25 50 75 100 INCORRECT 1 2 3 4

CHALLENGE CARD-STUDENT

Q: _____

A: _____

CORRECT 25 50 75 100 INCORRECT 1 2 3 4

CHALLENGE CARD-STUDENT

Q: _____

A: _____

CORRECT 25 50 75 100 INCORRECT 1 2 3 4

CHALLENGE CARD-STUDENT

Q: _____

A: _____

CORRECT 25 50 75 100 INCORRECT 1 2 3 4

CHALLENGE CARD-STUDENT

Q: _____

A: _____

CORRECT 25 50 75 100 INCORRECT 1 2 3 4

CHALLENGE CARD-STUDENT

Q: _____

A: _____

CORRECT 25 50 75 100 INCORRECT 1 2 3 4

CHALLENGE CARD-STUDENT

Q: _____

A: _____

CORRECT 25 50 75 100 INCORRECT 1 2 3 4

Name: _____

Date: _____

SAVING PLAY TO SAVE



CHALLENGE CARDS

CHALLENGE CARD

Q: Calculate 5% interest on \$450.

A: \$20

CORRECT 25 50 75 100 INCORRECT 1 2 3 4

CHALLENGE CARD

Q: Name 2 things you should consider when creating a budget.

A: Income and expenses.

CORRECT 25 50 75 100 INCORRECT 1 2 3 4

CHALLENGE CARD

Q: Jessica is creating a budget. She earns \$50 per week and has \$180 in expenses per month. She wants to know if she can afford to buy something that would cost her \$25 a month for 5 months. What do you recommend?

A: She earns \$200 a month, so she has \$20 left over after expenses. She can't make the purchase right now. She can save for 7 weeks to make the purchase.

CORRECT 25 50 75 100 INCORRECT 1 2 3 4

CHALLENGE CARD

Q: Why create a budget? Give 2 reasons.

A: Two of the following reasons:
to plan for the unexpected, to meet financial goals,
to save money, to calculate your purchasing power.

CORRECT 25 50 75 100 INCORRECT 1 2 3 4

CHALLENGE CARD

Q: If my balance is \$567 and I earn 3.5% in interest, how much is my new balance?

A: Interest earned will be \$19.85 and the new balance will be \$586.85.

CORRECT 25 50 75 100 INCORRECT 1 2 3 4

CHALLENGE CARD-STUDENT

Q: _____

A: _____

CORRECT 25 50 75 100 INCORRECT 1 2 3 4

CHALLENGE CARD-STUDENT

Q: _____

A: _____

CORRECT 25 50 75 100 INCORRECT 1 2 3 4

CHALLENGE CARD-STUDENT

Q: _____

A: _____

CORRECT 25 50 75 100 INCORRECT 1 2 3 4

CHALLENGE CARD-STUDENT

Q: _____

A: _____

CORRECT 25 50 75 100 INCORRECT 1 2 3 4

CHALLENGE CARD-STUDENT

Q: _____

A: _____

CORRECT 25 50 75 100 INCORRECT 1 2 3 4

Name: _____

Date: _____

SAVING PLAY TO SAVE

SAVINGS CARDS



SAVINGS CARD

Congratulations!

You earn 5% interest
on your points.

SAVINGS CARD

Congratulations!

You earn 5% interest
on your points.

SAVINGS CARD

Congratulations!

You earn 5% interest
on your points.

SAVINGS CARD

Congratulations!

You earn 5% interest
on your points..

SAVINGS CARD

Congratulations!

You earn 5% interest
on your points..

SAVINGS CARD

Congratulations!

You earn 5% interest
on your points.

SAVINGS CARD

Congratulations!

You earn 10% interest
on your points.

SAVINGS CARD

Congratulations!

You earn 10% interest
on your points.

SAVINGS CARD

Congratulations!

You earn 10% interest
on your points.

SAVINGS CARD

Congratulations!

You earn 10% interest
on your points.

SAVINGS CARD

Congratulations!

You earn 10% interest
on your points.

SAVINGS CARD

Congratulations!

You earn 1% interest
on your points.

SAVINGS CARD

Congratulations!

You earn 1% interest
on your points.

SAVINGS CARD

Congratulations!

You earn 1% interest
on your points.

SAVINGS CARD

Congratulations!

You earn 1% interest
on your points.

Name: _____

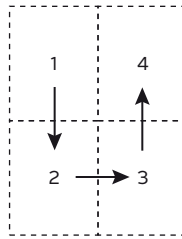
Date: _____

SAVING PLAY TO SAVE

CHANCE CARDS



CHANCE CARD	Your wallet gets stolen, and you lose 25 points.	CHANCE CARD	You have to pay 10 points in interest on a caisse loan.	CHANCE CARD	You spend 20 points on useless stuff.
CHANCE CARD	You pay off an old debt to a friend for 20 points.	CHANCE CARD	There are holes in your pockets, and you lose 5 points.	CHANCE CARD	You buy a present for your friend's birthday, and it costs you 10 points.
CHANCE CARD	You buy flowers to surprise your mom. Pay 15 points.	CHANCE CARD	You go to the movies and it runs you 15 points.	CHANCE CARD	You go out to eat with friends. Pay 10 points.
CHANCE CARD	You went crazy at the fair and spent 25 points.	CHANCE CARD	A shopping spree costs you 20 points.	CHANCE CARD	You had to pay 5 points for someone to watch your lizard over vacation.
CHANCE CARD	Food for your guinea pig runs you 20 points.	CHANCE CARD	You left 20 points out on the counter and now they're gone.	CHANCE CARD	You lost some school supplies and have to replace them. Pay 10 points.



SAVING PLAY TO SAVE

1
START

2
Back to school.
You have to buy school supplies.
Pay 50 points.

3
You've made new friends! If you buy candy for them, pay 5 points and move forward 1 space.
If you save your money, move forward 2 spaces.

4
CHALLENGE

5
SAVINGS

6
You walked your neighbour's dog.
You earn 10 points.

7
CHALLENGE

8
It's your teacher's birthday.
You give her a gift that costs 10 points.



KINDERGARTEN

16
CHALLENGE

15
SAVINGS

14
CHALLENGE

13
CHANCE

12
You go to the book fair. If you buy 2 books, move forward 1 space.
If you buy 1 book, move forward 3 spaces.

11
SAVINGS

10
CHALLENGE

9
You got your first progress report and your parents are proud.
Collect 5 points.

17
CHANCE

18
You visit your grandmother and **she gives you 5 points.**

19
SAVINGS

20
CHALLENGE

21
You go on the school field trip and **spend 10 points.**

22
\$\$
CHALLENGE

23
Back to school.
Pay 55 points for school supplies.

24
SAVINGS

1st GRADE

32
Happy birthday!
Collect 40 points in gifts.

31
Sick day.
Skip a turn.

30
CHANCE

29
CHALLENGE

28
SAVINGS

27
CHANCE

26
You know how to write your letters.
Move forward 2 spaces.

25
CHALLENGE

33
CHALLENGE

34
You have a new baby brother!
Move forward 3 spaces.

35
SAVINGS

36
CHALLENGE



37
SAVINGS

38
Your progress report is awesome!
Prove it by advancing to the next Challenge space.

39
CHANCE

40
Your parents return from a trip and take you out to dinner.
Collect 5 points.



48 CHALLENGE	47 A field trip to an outdoor adventure park gives you an energy boost. Move forward 1 space.	46 SAVINGS	45 You watched your aunt's cat for her. Move forward 1 space.	44 CHALLENGE	43 \$\$ CHANCE	42 School's out for summer! Buy yourself an ice cream for 5 points.	41 CHALLENGE
-----------------	--	---------------	--	-----------------	----------------------	--	-----------------

2nd GRADE

49 CHANCE	50 As a reward, you get to eat lunch in the classroom with your teacher. Move forward 2 spaces.	51 You've lost several things you need for school. Pay 10 points.	52 CHALLENGE	53 CHANCE	54 CHALLENGE	55 SAVINGS	56 Sick day. Skip a turn.
--------------	--	--	-----------------	--------------	-----------------	---------------	--




64 \$\$ Back to school. Pay 60 points for school supplies.	63 CHANCE	62 Your progress report is perfect! Show what you've learned by advancing to the next Challenge space.	61 SAVINGS	60 You got 50 points for Christmas.	59 CHANCE	58 SAVINGS	57 A night at the movies costs you 15 points.
--	--------------	---	---------------	--	--------------	---------------	--




65 CHALLENGE	66 You hit the trick-or-treating jackpot. Make sure to brush! Move forward 4 spaces.	67 SAVINGS	68 You're more popular than ever. Collect 15 points.	69 CHALLENGE	70 CHANCE	71 You're late to school. Move back 1 space.	72 CHALLENGE
-----------------	---	---------------	---	-----------------	--------------	---	-----------------

3rd GRADE

80 You go on a trip with your parents and miss a week of school. Skip a turn.	79 CHANCE	78 SAVINGS	77 You missed an important test. Answer a Challenge card correctly to continue. If you fail, go back to the start of the school year.	76 You do your neighbour a favour. Collect 10 points.	75 CHALLENGE	74 CHANCE	73 SAVINGS
--	--------------	---------------	--	--	-----------------	--------------	---------------



81 Sick day. Skip a turn.	82 SAVINGS	83 The schoolyard gets renovated. Pay 50 points.	84 SAVINGS	85 \$\$ Back to school. Pay 45 points for school supplies.	86 Your friends put you to the challenge. Move forward 1 space.	87 CHALLENGE	88 SAVINGS
--	---------------	---	---------------	--	--	-----------------	---------------





6th GRADE



136
CHANCE

135
CHALLENGE

134
Sick day.
Skip a turn.

133
SAVINGS

132
CHALLENGE

131
CHANCE

130
It's time
to buy new
clothes.
**Pay
40 points.**

129
CHALLENGE

121
Brain
overload.
**Move
forward
1 space.**

122
CHANCE

123
You're in
a bad mood.
**Move back
1 space.**

124
SAVINGS

125
It's the last
week of
school and
you're sad.
**Move
forward
1 space.**

126
CHANCE

127
\$\$
A colourful
start to
the year.
**Move
forward
1 space.**

128
SAVINGS

120
SAVINGS

119
CHALLENGE

118
CHANCE

117
Your
impetuosity
gets the better of
you. Find the word
"impetuosity" in
the dictionary in
less than 1 minute
and get
10 points.

116
Sick day.
Skip a turn.

115
SAVINGS

114
CHALLENGE

113
Special
school outing.
**Pay
10 points.**



5th GRADE

105
SAVINGS

106
\$\$
Back to
school's
not cheap.
**Pay 75 points
for supplies.**

107
CHALLENGE

108
CHANCE

109
SAVINGS

110
CHALLENGE

111
You pass a
math test with
flying colours.
**Collect
15 points.**

112
You start
babysitting
your little
brother.
**Collect
5 points.**

104
Sick day.
Skip a turn.

103
CHANCE

102
End-of-year
field trip.
**Pay
25 points.**

101
SAVINGS

100
CHANCE

99
There's a
surprise guest
at school
and you get
a free book.
**Collect
10 points.**

98
SAVINGS

97
You lost
your mittens.
**Move back
1 space.**

4th GRADE



89
You forgot
your lunch
box.
**Pay
5 points
for a meal in
the cafeteria.**

90
CHANCE

91
CHALLENGE

92
CHALLENGE

93
It's Valentine's
Day and
you've got a
secret crush.
**Move
forward
1 space.**

94
SAVINGS

95
CHALLENGE

96
CHANCE



SAVING PLAY TO SAVE



146
CHANCE

145
CHANCE

144
CHALLENGE

143
CHALLENGE

142
SAVINGS

141
Your end-of-year exams require a lot of work.
Move back 4 spaces so you can prepare.



140
You get caught in the rain.
Move back 3 spaces.

139
You help put on a show.
Collect 20 points.

138
SAVINGS

137
CHALLENGE

