

November 6, 2009

## QUÉBEC-ONTARIO

### October's unemployment rate fell in Québec, but rose in Ontario

#### HIGHLIGHTS

- In Québec, the unemployment rate declined for a second straight month, falling from 8.8% in September to 8.5% in October, dropping below the Canadian average for the first time since 1976, year when LFS data were first compiled.
- The meagre 1,400 jobs created in October are not the main reason for this pullback; the situation is rather due to a drop of 14,600 in the labour force (workers and job seekers).
- In Ontario, the unemployment rate rose by 0.1, to 9.3%. Ontario's unemployment rate has eclipsed that of Québec for 10 consecutive months now.
- The number of Ontario workers has been slashed by 12,000, wiping out the previous month's gains (+12,600).

#### COMMENTS

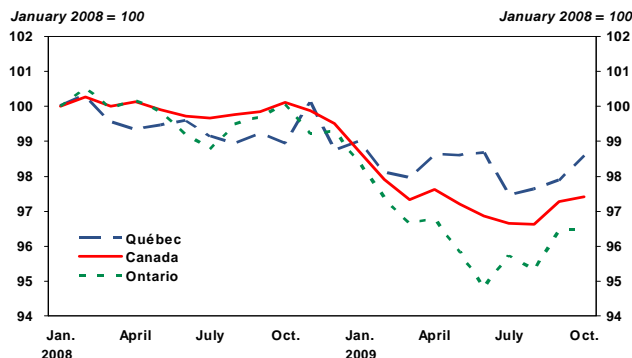
In today's economic climate where good news often follows bad news, all options were on the table. October ended on a positive note in Québec while Ontario saw three months of continued job growth come to a halt.

In October, gains in full-time jobs (+23,900) in Québec were clipped by the loss of part-time jobs (-22,500). Most gains stemmed from the self-employed (+13,800). In Ontario however, part-time job losses (-15,200) clearly overshadowed full-time job gains (+3,200). In fact, most hiring took place in the private sector (+11,100).

It is interesting to see how jobs in the sensitive sectors of construction and manufacturing have evolved over an extended period. In Québec, since the start of 2009, construction has gained 4,000 jobs while 12,800 manufacturing jobs have been lost since December 2008. Ontario has lost 14,400 jobs in the construction sector since the start of 2009 in addition to 93,500 manufacturing jobs.

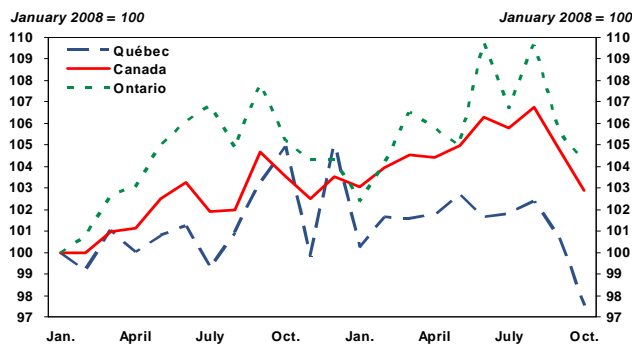
It is not surprising to note that full-time jobs have fallen more steeply in Ontario in almost two years (see graphs), since construction and manufacturing offer more full-time than part-time jobs. The scope of the job losses in Ontario are crystal clear compared with the losses posted in Québec and in Canada, as a whole.

#### Full-time jobs rise



Sources: Statistics Canada and Desjardins, Economic Studies

#### Part-time jobs fall



Sources: Statistics Canada and Desjardins, Economic Studies

**Implications:** Even if many indicators, including the Desjardins Leading Index, point to the end of the recession in Québec, it will take a few more months for the labour market to fully recover. We will have to see if the drop in the labour force that began in summer 2009 will continue. In Ontario, the automobile sector is still getting back on its feet and its weakness will continue to plague the labour market until early 2010, at least.

**Joëlle Noreau**  
Senior Economist

**François Dupuis**  
Vice-President and Chief Economist

**Yves St-Maurice**  
Director and Deputy Chief Economist

**Hélène Bégin**  
Senior Economist

**Benoit P. Durocher**  
Senior Economist

**Joëlle Noreau**  
Senior Economist

514-281-2336 or 1 866 866-7000, ext. 2336  
418-835-2450 or 1 866 835-8444, ext. 2450  
E-mail: [desjardins.economics@desjardins.com](mailto:desjardins.economics@desjardins.com)

**NOTE TO READERS:** The letters **k**, **M** and **B** are used in texts and tables to refer to thousands, millions and billions respectively.

**IMPORTANT:** This document is based on public information, obtained from sources that are deemed to be reliable. Desjardins Group in no way guarantees that the information is complete or accurate. The document is provided solely for information purposes and does not constitute an offer or solicitation for purchase or sale. The document may under no circumstances be construed as a commitment by Desjardins Group, which takes no responsibility for the consequences of any decision made based on the information herein. The prices and rates shown are for information purposes only as they may change at any time based on market conditions. Past returns are no guarantee of future performance, and Desjardins Group does not hereby purport to provide any investment advice. The opinions and forecasts contained herein are, unless otherwise indicated, those of the document's authors and do not represent the official position of Desjardins Group. **Copyright © 2009, Desjardins Group. All rights reserved.**

# REFERENCE TABLES OF LABOUR MARKET

November 6, 2009

## Variation by sector - October 2009

	GAINING Sectors	Balance		LOSING Sectors	Balance	
		1 month	1 year		1 month	1 year
<b>CANADA</b>	Transportation and warehousing	22,200	-50,700	Trade	-30,800	-44,700
	Construction	11,200	-72,500	Others services	-19,900	19,300
	Health care	8,300	32,900	Others primaries	-11,300	-37,200
	Educational services	8,100	-11,700	Manufacturing	-8,200	-217,700
<b>QUÉBEC</b>	Prof. and scient. services	15,200	17,300	Others services	-8,700	-7,200
	Transportation and warehousing	7,100	-11,000	Fin., insurance and real estate	-5,800	700
	Construction	4,200	-9,000	Health care	-5,000	-14,400
	Manufacturing	4,100	-6,300	Others primaries	-3,600	-7,900
<b>ONTARIO</b>	Construction	16,400	-13,800	Trade	-15,600	-32,100
	Transportation and warehousing	6,900	-31,800	Prof. and scient. services	-9,400	15,800
	Educational services	2,800	-39,200	Public administration	-8,800	-29,500
	Manufacturing	2,600	-126,400	Others services	-6,800	14,200

Source: LFS, Statistics Canada

## Labour Market

October 2009	NUMBER OF EMPLOYEES	JOB CREATION in numbers					Last year in %
		October 2009	Last month	Last 3 months	Since december	Last year	
<b>Seasonally adjusted data</b>							
<b>TOTAL JOBS</b>	Canada	16,794,800	-43,200	14,500	-316,200	-399,900	-2.3%
	Québec	3,828,100	1,400	6,200	-56,200	-62,100	-1.6%
	Ontario	6,513,100	-12,000	12,800	-152,100	-205,900	-3.1%
<b>PUBLIC SECTOR EMPLOYEES</b>	Canada	3,407,400	-25,600	-700	-39,300	-54,500	-1.6%
	Québec	807,700	-2,600	8,300	-32,200	-8,600	-1.1%
	Ontario	1,222,400	-24,400	-37,800	-43,700	-67,200	-5.2%
<b>PRIVATE SECTOR EMPLOYEES</b>	Canada	10,632,300	-45,200	-13,100	-373,600	-449,200	-4.1%
	Québec	2,431,800	-9,700	-15,400	-87,500	-109,800	-4.3%
	Ontario	4,250,500	11,100	29,500	-125,300	-166,800	-3.8%
<b>SELF-EMPLOYED</b>	Canada	2,755,000	27,500	28,200	96,600	103,600	3.9%
	Québec	588,600	13,800	13,200	63,400	56,300	10.6%
	Ontario	1,040,200	1,300	21,100	16,900	28,100	2.8%

Source: Statistics Canada, Labour Force Survey

<b>Labour Market - Recent trends</b>									
<b>Seasonally adjusted data</b>									
	Employment in numbers	Job creation in last:			Labour Force Numbers	Variation over 1 month	Participation rate	Employment rate	Unemploy- ment rate
		1 month	3 months	12 months					
<b>Canada</b>									
2008.10	17,194,700	2,300	112,300	219,500	18,346,300	24,300	67.8%	63.6%	6.3%
2008.11	17,131,400	-63,300	31,200	103,900	18,302,200	-44,100	67.6%	63.3%	6.4%
2008.12	17,111,000	-20,400	-81,400	79,600	18,321,200	19,000	67.6%	63.1%	6.6%
2009.01	16,982,000	-129,000	-212,700	-88,600	18,292,100	-29,100	67.4%	62.6%	7.2%
2009.02	16,899,400	-82,600	-232,000	-207,200	18,315,200	23,100	67.4%	62.2%	7.7%
2009.03	16,838,100	-61,300	-272,900	-264,000	18,294,700	-20,500	67.3%	61.9%	8.0%
2009.04	16,874,000	35,900	-108,000	-250,900	18,338,600	43,900	67.4%	62.0%	8.0%
2009.05	16,832,200	-41,800	-67,200	-299,400	18,380,600	42,000	67.5%	61.8%	8.4%
2009.06	16,824,800	-7,400	-13,300	-306,200	18,416,700	36,100	67.5%	61.6%	8.6%
2009.07	16,780,300	-44,500	-93,700	-302,100	18,363,200	-53,500	67.2%	61.4%	8.6%
2009.08	16,807,400	27,100	-24,800	-292,800	18,412,300	49,100	67.3%	61.4%	8.7%
2009.09	16,838,000	30,600	13,200	-354,400	18,387,800	-24,500	67.1%	61.4%	8.4%
2009.10	16,794,800	-43,200	14,500	-399,900	18,382,200	-5,600	67.0%	61.2%	8.6%
<b>Québec</b>									
2008.10	3,890,200	3,200	33,100	16,400	4,192,800	500	65.6%	60.9%	7.2%
2008.11	3,891,700	1,500	30,200	2,000	4,192,600	-200	65.6%	60.8%	7.2%
2008.12	3,884,300	-7,400	-2,700	-1,600	4,191,600	-1,000	65.5%	60.7%	7.3%
2009.01	3,858,500	-25,800	-31,700	-30,800	4,181,900	-9,700	65.3%	60.2%	7.7%
2009.02	3,840,100	-18,400	-51,600	-52,900	4,169,300	-12,600	65.0%	59.9%	7.9%
2009.03	3,835,500	-4,600	-48,800	-46,300	4,181,700	12,400	65.2%	59.8%	8.3%
2009.04	3,857,900	22,400	-600	-9,800	4,210,800	29,100	65.6%	60.1%	8.4%
2009.05	3,863,600	5,700	23,500	-14,200	4,229,600	18,800	65.8%	60.1%	8.7%
2009.06	3,859,000	-4,600	23,500	-26,200	4,229,600	0	65.7%	60.0%	8.8%
2009.07	3,821,900	-37,100	-36,000	-35,200	4,201,100	-28,500	65.3%	59.4%	9.0%
2009.08	3,830,200	8,300	-33,400	-31,300	4,212,800	11,700	65.4%	59.4%	9.1%
2009.09	3,826,700	-3,500	-32,300	-60,300	4,196,700	-16,100	65.0%	59.3%	8.8%
2009.10	3,828,100	1,400	6,200	-62,100	4,182,100	-14,600	64.8%	59.3%	8.5%
<b>Ontario</b>									
2008.10	6,719,000	-11,300	50,600	74,000	7,197,800	2,100	68.2%	63.6%	6.7%
2008.11	6,662,900	-56,100	-20,000	10,400	7,174,500	-23,300	67.9%	63.0%	7.1%
2008.12	6,665,200	2,300	-65,100	24,200	7,182,000	7,500	67.9%	63.0%	7.2%
2009.01	6,594,200	-71,000	-124,800	-59,300	7,164,300	-17,700	67.6%	62.3%	8.0%
2009.02	6,558,900	-35,300	-104,000	-131,900	7,185,600	21,300	67.8%	61.8%	8.7%
2009.03	6,548,100	-10,800	-117,100	-134,600	7,168,400	-17,200	67.5%	61.7%	8.7%
2009.04	6,545,100	-3,000	-49,100	-151,700	7,166,300	-2,100	67.4%	61.6%	8.7%
2009.05	6,485,400	-59,700	-73,500	-219,800	7,156,100	-10,200	67.3%	61.0%	9.4%
2009.06	6,486,600	1,200	-61,500	-195,900	7,172,200	16,100	67.3%	60.9%	9.6%
2009.07	6,500,300	13,700	-44,800	-168,100	7,165,400	-6,800	67.2%	60.9%	9.3%
2009.08	6,512,500	12,200	27,100	-170,400	7,186,000	20,600	67.3%	61.0%	9.4%
2009.09	6,525,100	12,600	38,500	-205,200	7,182,500	-3,500	67.2%	61.0%	9.2%
2009.10	6,513,100	-12,000	12,800	-205,900	7,182,400	-100	67.1%	60.8%	9.3%

Source: Statistics Canada, Labour Force Survey

### Other Labour Market Indicators

SEASONALLY ADJUSTED DATA	Last publication		-1 MONTH	-3 MONTHS	-6 MONTHS	Same month -1 YEAR
	Month	Level				
<b>CANADA</b>						
Average weekly wages (\$)	August	828.14	823.62	817.87	820.89	811.65
Average hours worked in the manufacturing sector	August	37.4	37.3	36.7	36.6	37.3
<b>QUÉBEC</b>						
Average weekly wages (\$)	August	764.57	771.79	752.03	753.10	736.24
Average hours worked in the manufacturing sector <sup>1</sup>	August	36.4	36.7	36.1	36.1	36.6
<b>ONTARIO</b>						
Average weekly wages (\$)	August	853.43	846.29	843.11	846.63	839.60
Average hours worked in the manufacturing sector <sup>1</sup>	August	38.2	37.7	37.5	37.1	37.5

Source: Statistics Canada, Labour Force Survey

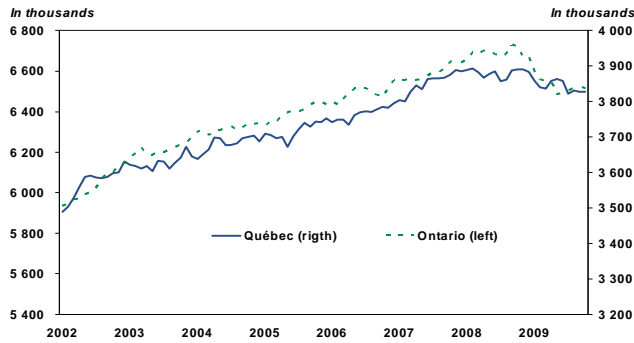
<sup>1</sup>: unadjusted data

### Annual Data

Annual average	2003	2004	2005	2006	2007	2008
<b>CANADA TOTAL JOBS</b>	15,672,280	15,946,980	16,169,720	16,484,330	16,866,420	17,125,900
<b>JOB CREATION</b>	361,860	274,700	222,740	314,610	382,090	259,480
<b>Job growth (%)</b>	2.4%	1.8%	1.4%	1.9%	2.3%	1.5%
<b>Unemployment rate</b>	7.6%	7.2%	6.8%	6.3%	6.0%	6.1%
<b>QUÉBEC TOTAL JOBS</b>	3,628,830	3,680,470	3,717,280	3,765,460	3,851,710	3,881,700
<b>JOB CREATION</b>	58,960	51,640	36,810	48,180	86,250	29,990
<b>Job growth (%)</b>	1.7%	1.4%	1.0%	1.3%	2.3%	0.8%
<b>Unemployment rate</b>	9.1%	8.5%	8.3%	8.0%	7.2%	7.2%
<b>ONTARIO TOTAL JOBS</b>	6,213,160	6,316,510	6,397,750	6,492,710	6,593,780	6,687,300
<b>JOB CREATION</b>	181,780	103,350	81,240	94,960	101,070	93,520
<b>Job growth (%)</b>	3.0%	1.7%	1.3%	1.5%	1.6%	1.4%
<b>Unemployment rate</b>	6.9%	6.8%	6.6%	6.3%	6.4%	6.5%

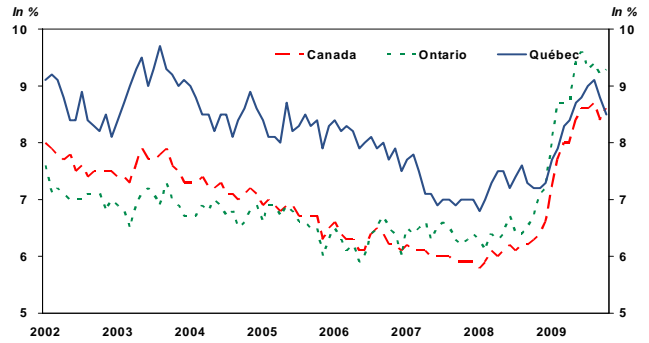
Source: Statistics Canada, Labour Force Survey

**QUÉBEC / ONTARIO – Level of employment**



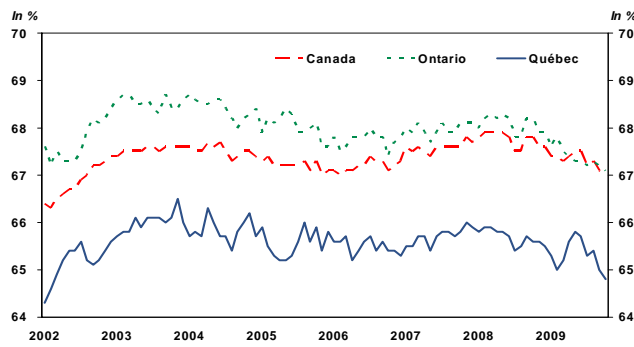
Sources: Statistics Canada and Desjardins, Economic Studies

**CANADA / QUÉBEC / ONTARIO – Unemployment Rate**



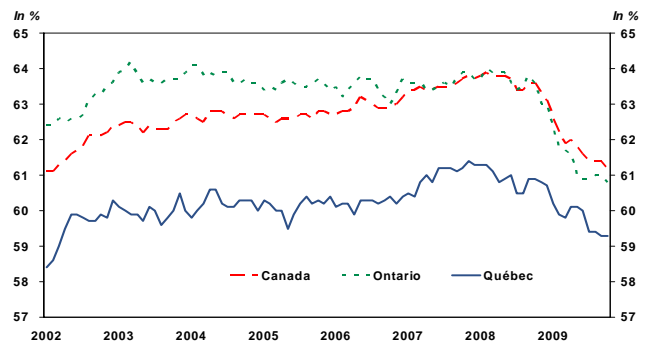
Sources: Statistics Canada and Desjardins, Economic Studies

**CANADA / QUÉBEC / ONTARIO – Participation Rate**



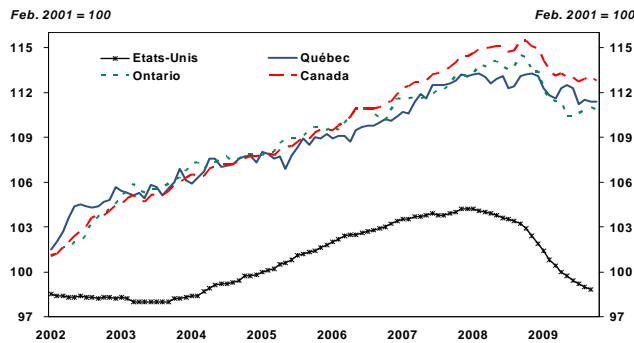
Sources: Statistics Canada and Desjardins, Economic Studies

**CANADA / QUÉBEC / ONTARIO – Employment Rate**



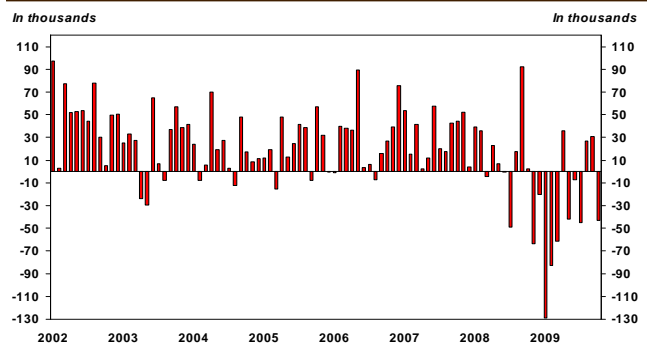
Sources: Statistics Canada and Desjardins, Economic Studies

**ÉTATS-UNIS / CANADA / QUÉBEC / ONTARIO – Employment Index**



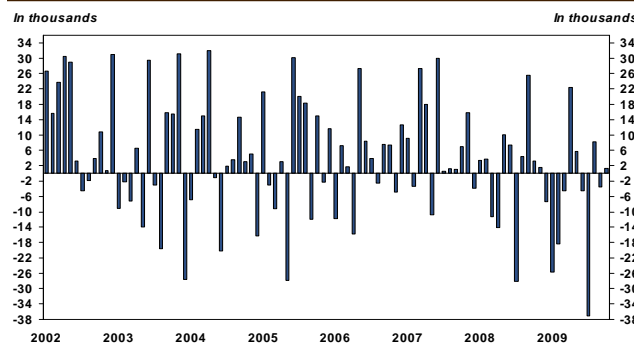
Sources: Statistics Canada and Desjardins, Economic Studies

**CANADA – Evolution of employment**



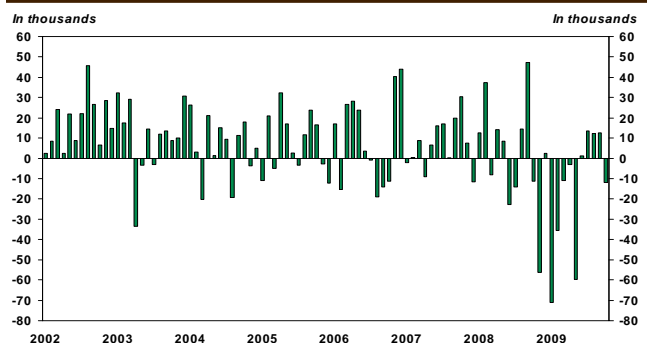
Sources: Statistics Canada and Desjardins, Economic Studies

**QUÉBEC – Evolution of employment**



Sources: Statistics Canada and Desjardins, Economic Studies

**ONTARIO – Evolution of employment**



Sources: Statistics Canada and Desjardins, Economic Studies

### LABOUR MARKET BY PROVINCE

SEASONALLY ADJUSTED DATA		October 2009	PREVIOUS MONTHS				Monthly averages			Employment in the last year
			2009.09	2009.08	2009.07	2009.06	3 months	6 months	12 months	
CANADA	JOBS	16,794,800	16,838,000	16,807,400	16,780,300	16,824,800	16,813,400	16,812,917	16,892,783	17,194,700
	CREATION	(43,200)	30,600	27,100	(44,500)	(7,400)	4,833	(13,200)	(33,325)	(399,900)
	Unemployment rate	8.6%	8.4%	8.7%	8.6%	8.6%	8.6%	8.6%	7.9%	-2.3%*
Newfoundland	JOBS	212,600	216,600	215,100	212,200	215,000	214,767	214,000	215,183	218,300
	CREATION	(4,000)	1,500	2,900	-2,800	2,500	133	-267	-475	-5,700
	Unemployment rate	17.0%	15.3%	15.6%	17.1%	15.6%	16.0%	16.0%	15.2%	-2.6%*
Prince Edward Island	JOBS	70,600	69,600	68,500	69,200	69,300	69,567	69,317	69,067	69,700
	CREATION	1,000	1,100	-700	-100	600	467	333	75	900
	Unemployment rate	12.0%	11.8%	13.7%	12.3%	12.2%	12.5%	12.5%	12.1%	1.3%*
Nova Scotia	JOBS	453,300	452,100	453,200	450,900	452,800	452,867	452,533	452,958	457,500
	CREATION	1,200	-1,100	2,300	-1,900	-100	800	667	-350	-4,200
	Unemployment rate	9.3%	9.5%	9.5%	9.2%	9.4%	9.4%	9.3%	9.0%	-0.9%*
New Brunswick	JOBS	369,400	367,800	364,900	364,900	366,900	367,367	366,567	366,275	369,200
	CREATION	1,600	2,900	0	-2,000	1,400	1,500	850	17	200
	Unemployment rate	8.5%	8.1%	9.3%	9.4%	9.2%	8.6%	8.9%	8.9%	0.1%*
Québec	JOBS	3,828,100	3,826,700	3,830,200	3,821,900	3,859,000	3,828,333	3,838,250	3,849,792	3,890,200
	CREATION	1,400	-3,500	8,300	-37,100	-4,600	2,067	-4,967	-5,175	-62,100
	Unemployment rate	8.5%	8.8%	9.1%	9.0%	8.8%	8.8%	8.8%	8.3%	-1.6%*
Ontario	JOBS	6,513,100	6,525,100	6,512,500	6,500,300	6,486,600	6,516,900	6,503,833	6,549,783	6,719,000
	CREATION	-12,000	12,600	12,200	13,700	1,200	4,267	-5,333	-17,158	-205,900
	Unemployment rate	9.3%	9.2%	9.4%	9.3%	9.6%	9.3%	9.4%	8.7%	-3.1%*
Manitoba	JOBS	605,500	608,900	611,300	607,900	606,200	608,567	607,983	607,433	606,900
	CREATION	-3,400	-2,400	3,400	1,700	-1,900	-800	217	-117	-1,400
	Unemployment rate	5.8%	5.3%	5.7%	5.2%	5.2%	5.6%	5.4%	5.0%	-0.2%*
Saskatchewan	JOBS	517,700	519,000	516,900	520,100	524,800	517,867	520,283	520,550	519,700
	CREATION	-1,300	2,100	-3,200	-4,700	1,600	-800	-400	-167	-2,000
	Unemployment rate	5.3%	4.6%	5.0%	4.7%	4.6%	5.0%	4.9%	4.6%	-0.4%*
Alberta	JOBS	1,967,200	1,982,100	1,979,100	1,985,800	1,989,500	1,976,133	1,982,867	1,996,608	2,035,200
	CREATION	-14,900	3,000	-6,700	-3,700	-4,000	-6,200	-4,283	-5,667	-68,000
	Unemployment rate	7.5%	7.1%	7.4%	7.2%	6.8%	7.3%	7.1%	6.0%	-3.3%*
British Columbia	JOBS	2,257,200	2,270,100	2,255,700	2,247,100	2,254,700	2,261,000	2,257,267	2,265,125	2,309,000
	CREATION	-12,900	14,400	8,600	-7,600	-4,100	3,367	-33	-4,317	-51,800
	Unemployment rate	8.3%	7.4%	7.8%	7.8%	8.1%	7.8%	7.8%	7.1%	-2.2%*

Source: Statistics Canada, Labour force Survey \* Change in employment in the last year